

 **BOEING**
COMPONENT
MAINTENANCE MANUAL

TO: ALL HOLDERS OF MAIN LANDING GEAR WIRE HARNESS COMPONENT MAINTENANCE MANUAL
32-10-53

REVISION NO. 2 DATED MAR 01/03

HIGHLIGHTS

Pages which have been added or revised are outlined below together with the highlights of the revision. Remove and insert the affected pages as listed and enter Revision No. and date on the Record of Revision Sheet.

CHAPTER/SECTION
AND PAGE NO.

DESCRIPTION OF CHANGE

102	Changed Table 101, Equipment List, to agree with the latest engineering data.
1003-1004,1006-1016, 1021-1026,1029,1031, 1033,1037-1042, 1047-1052,1054-1057, 1063-1065	Changed parts list per the latest engineering data.

32-10-53

HIGHLIGHTS

01.1

Page 1

Mar 01/03

MAIN LANDING GEAR WIRING HARNESS

PART NUMBERS 287T6104-4001 THRU -4022,
-4025 THRU -4036

COMPONENT MAINTENANCE MANUAL
WITH
ILLUSTRATED PARTS LIST

32-10-53

TITLE PAGE

Page 1

Mar 01/01

01.1



REVISION RECORD

- Retain this record in front of manual. On receipt of revision, insert revised pages in the manual, and enter revision number, date inserted and initial.

REVISION NUMBER	REVISION DATE	DATE FILED	BY	REVISION NUMBER	REVISION DATE	DATE FILED	BY

32-10-53

REVISION RECORD

01

Page 1

Jul 01/00

TEMPORARY REVISION AND SERVICE BULLETIN RECORD

BOEING SERVICE BULLETIN	BOEING TEMPORARY REVISION	OTHER DIRECTIVE	DATE OF INCORPORATION INTO MANUAL

32-10-53

TR & SB RECORD

01

Page 1

Jul 01/00

PAGE	DATE	CODE	PAGE	DATE	CODE
32-10-53			TESTING & FAULT ISOLATION CONT.		
TITLE PAGE			112	MAR 01/01	01.1
1	MAR 01/01	01.1	113	JUL 01/00	01
2	BLANK		114	JUL 01/00	01
REVISION RECORD			115	JUL 01/00	01
1	JUL 01/00	01	116	JUL 01/00	01
2	BLANK		REPAIR-GENERAL		
TR & SB RECORD			601	JUL 01/00	01
1	JUL 01/00	01	602	MAR 01/01	01.1
2	BLANK		603	JUL 01/00	01
LIST OF EFFECTIVE PAGES			604	JUL 01/00	01
*1	MAR 01/03	01	605	JUL 01/00	01
THRU LAST PAGE			606	BLANK	
CONTENTS			ILLUSTRATED PARTS LIST		
1	JUL 01/00	01	1001	JUL 01/00	01
2	BLANK		1002	JUL 01/00	01
INTRODUCTION			*1003	MAR 01/03	01.1
1	JUL 01/00	01	*1004	MAR 01/03	01.1
2	BLANK		*1005	MAR 01/03	01.1
DESCRIPTION & OPERATION			*1006	MAR 01/03	01.1
1	JUL 01/00	01	*1007	MAR 01/03	01.1
2	BLANK		*1008	MAR 01/03	01.1
TESTING & FAULT ISOLATION			*1009	MAR 01/03	01.1
101	JUL 01/00	01	*1010	MAR 01/03	01.1
*102	MAR 01/03	01.1	*1011	MAR 01/03	01.1
103	JUL 01/00	01	*1012	MAR 01/03	01.1
104	JUL 01/00	01	*1013	MAR 01/03	01.1
105	MAR 01/01	01.1	*1014	MAR 01/03	01.1
106	JUL 01/00	01	*1015	MAR 01/03	01.1
107	JUL 01/00	01	*1016	MAR 01/03	01.1
108	MAR 01/01	01.1	*1017	MAR 01/03	01.1
109	JUL 01/00	01	*1018	MAR 01/03	01.1
110	JUL 01/00	01	*1019	MAR 01/03	01.1
111	MAR 01/01	01.1	*1020	MAR 01/03	01.1
			*1021	MAR 01/03	01.1
			*1022	MAR 01/03	01.1
			*1023	MAR 01/03	01.1
			*1024	MAR 01/03	01.1
			*1025	MAR 01/03	01.1
			*1026	MAR 01/03	01.1
			*1027	BLANK	

* = REVISED, ADDED OR DELETED

32-10-53

EFFECTIVE PAGES
CONTINUED Page 1
01 Mar 01/03

PAGE	DATE	CODE	PAGE	DATE	CODE
ILLUSTRATED PARTS LIST		CONT.			
*1028	MAR 01/03	01.1			
*1029	MAR 01/03	01.1			
*1030	MAR 01/03	01.1			
*1031	MAR 01/03	01.1			
*1032	MAR 01/03	01.1			
*1033	MAR 01/03	01.1			
*1034	MAR 01/03	01.1			
*1035	MAR 01/03	01.1			
*1036	MAR 01/03	01.1			
*1037	MAR 01/03	01.1			
*1038	MAR 01/03	01.1			
*1039	MAR 01/03	01.1			
*1040	MAR 01/03	01.1			
*1041	MAR 01/03	01.1			
*1042	MAR 01/03	01.1			
*1043	BLANK				
*1044	MAR 01/03	01.1			
*1045	MAR 01/03	01.1			
*1046	MAR 01/03	01.1			
*1047	MAR 01/03	01.1			
*1048	MAR 01/03	01.1			
*1049	MAR 01/03	01.1			
*1050	MAR 01/03	01.1			
*1051	MAR 01/03	01.1			
*1052	MAR 01/03	01.1			
*1053	BLANK				
*1054	MAR 01/03	01.1			
*1055	MAR 01/03	01.1			
*1056	MAR 01/03	01.1			
*1057	MAR 01/03	01.1			
*1058	BLANK				
*1059	MAR 01/03	01.1			
*1060	MAR 01/03	01.1			
*1061	MAR 01/03	01.1			
*1062	MAR 01/03	01.1			
*1063	MAR 01/03	01.1			
*1064	MAR 01/03	01.1			
*1065	MAR 01/03	01.1			
*1066	BLANK				

* = REVISED, ADDED OR DELETED

32-10-53

EFFECTIVE PAGES
LAST PAGE Page 2
01 Mar 01/03



TABLE OF CONTENTS

<u>Paragraph Title</u>	<u>Page</u>
Description and Operation	1
Testing and Fault Isolation	101
Disassembly*[1]
Cleaning.*[1]
Check*[1]
Repair.	601
Assembly.*[1]
Fits and Clearances (not applicable)	
Special Tools*[2]
Illustrated Parts List.	1001

*[1] Use applicable procedures in 20-11-04 and standard industry practices.
*[2] Special instructions not required.

INTRODUCTION

The instructions in this manual provide the information necessary to perform maintenance functions including test, fault isolation, and replacement of defective components.

This manual is divided into separate sections:

- | | |
|--|------------------------------|
| 1. Title Page | 4. List of Effective Pages |
| 2. Record of Revisions | 5. Table of Contents |
| 3. Temporary Revision &
Service Bulletin Record | 6. Introduction |
| | 7. Procedures & IPL Sections |

Refer to the Table of Contents for the page location of applicable sections.

An explanation of the use of the Illustrated Parts List is provided in the Introduction to that section.

All weights and measurements used in the manual are in English units, unless otherwise stated. When metric equivalents are given they will be in parentheses following the English units.

Design changes, optional parts, configuration differences and Service Bulletin modifications create alternate part numbers. These are identified in the Illustrated Parts List (IPL) by adding an alphabetical character to the basic item number. The resulting item number is called an alpha-variant. Throughout the manual, IPL basic item number references also apply to alpha-variants unless otherwise indicated.

Verification:

Testing/FI

32-10-53

INTRODUCTION

01

Page 1

Jul 01/00

MAIN LANDING GEAR WIRING HARNESS

DESCRIPTION AND OPERATION

1. Description

- A. The Main Landing Gear Wiring Harness contains all wiring, conduits, J-box and associated mounting brackets assembled to provide a replaceable harness assembly for the assembled landing gear.

2. Operation

- A. The landing gear operates with center hydraulic system pressure. The main landing gear uses hydraulic pressure from the center system to retract and extend. The main landing gear wiring harness contains the junction box assemblies and the wire harness assemblies. The wire harness interconnects the sensors with the connectors. The sensors perform the following functions:
- (1) The brake temp sensor monitors the temperature of the medium being measured and sends signals to the brake temperature monitor unit.
 - (2) The wheel speed transducer makes a signal that is directly in proportion to the aircraft wheel speed. The electrical connector connects to the output of the transducer to the brake system control unit.
 - (3) The proximity sensors left/right MLG truck tilt and side brace down get position input of airplane components then supply this position data to the proximity sensor electronics units.

32-10-53

DESCRIPTION & OPERATION

01

Page 1

Jul 01/00

TESTING AND FAULT ISOLATION

1. Fault and Isolation

- A. To test the wire bundle, perform the continuity check per applicable schematics.
- B. Test the sensors per vendor's CMM as shown below:

<u>SENSOR</u>	<u>VENDOR ATA #</u>	<u>VENDOR ADDRESS</u>
S236,S237,S240, S241,S245,S246, S258,S259,S262, S263,S267,S268	32-09-11	Eldec Corporation 16700 13th Place PO Box 100 Lynnwood, Washington 98036
TS81 thru TS89	32-43-59	Crane Company Hydro-Aire Div 3000 Winona Avenue PO Box 7722 Burbank, California 91510
TS91 thru TS98	32-46-11	Lewis Engineering Co 238 Water Street Naugatuck, Connecticut 06770-2803

- C. See Table 101 for Equipment List.

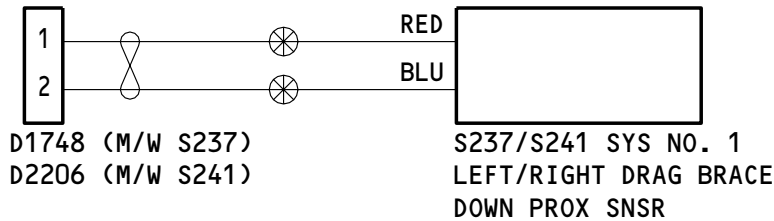
WIRE BUNDLE	EQUIPMENT P/N	REFERENCE DESIGNATOR
286T0668-OAG	BACC63BP12B3SN BACC63BP12D3SN BACC10KA12 BACC63BV24B30P6	D01714, D01718 D02016, D02018 D02016T, D02018T D05022J
286T0670-OAF	BACC63BV12B3SN BACC63BV24B30PN BACC63BV24B30SN	D01746J, D01748J D5026J D14862J
286T0674-OAF	BACC63BV12B3S7 BACC63BV24B30P6 BACC63BV24B30S6	D01750J, D01752J D05024J D14864J
286T0676-OAG	BACC63BP12B3SN BACC63BP12D3SN BACC10KA12 BACC63BV24B30PN	D01706, D01710 D02012, D02014 D02012T, D02014T D05028J
286T0682-OAF	BACC63BV12B3S7 BACC63BV24B30P6 BACC63BV24B30S6	D02208J, D02210J D05030J D06993J
286T0684-OAF	BACC63BV12B3SN BACC63BV24B30PN BACC63BV24B30SN	D02204J, D02206J D05034J D06991J
286T0686-OAG	BACC63BP12B3SN BACC63BP12D3SN BACC10KA12 BACC63BV24B30PN	D01708, D01712 D02020, D02022 D02020T, D02022T D05036J

Equipment List
 Table 101 (Sheet 1)

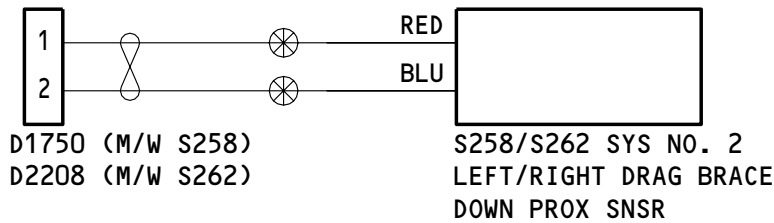
32-10-53

WIRE BUNDLE	EQUIPMENT P/N	REFERENCE DESIGNATOR
286T0688-OAG	BACC63BP12B3SN BACC63BP12D3SN BACC10KA12 BACC63BV24B30P6	D01716, D01720 D02024, D02026 D02024T, D02026T D05032J
286T1512-OAF	BACC63BP24D30SN BACC63BP24D30PN	D05028P D14862P
286T1514-OAF	BACC63BP24D30S6 BACC63BP24D30P6	D05022P D14864P
286T1522-OAF	BACC63BP24D30SN BACC63BP24D30PN	D05036P D06991P
286T1524-OAF	BACC63BP24D30S6 BACC63BP24D30P6	D05032P D06993P

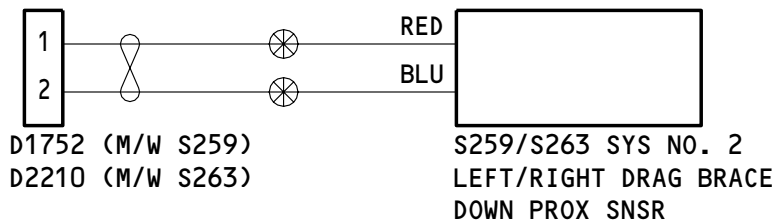
Equipment List
Table 101 (Sheet 2)



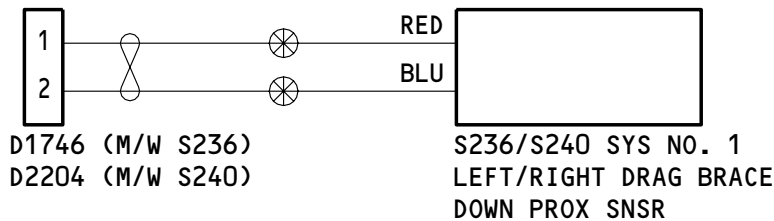
287T6104-4003,-4004



287T6104-4005,-4006



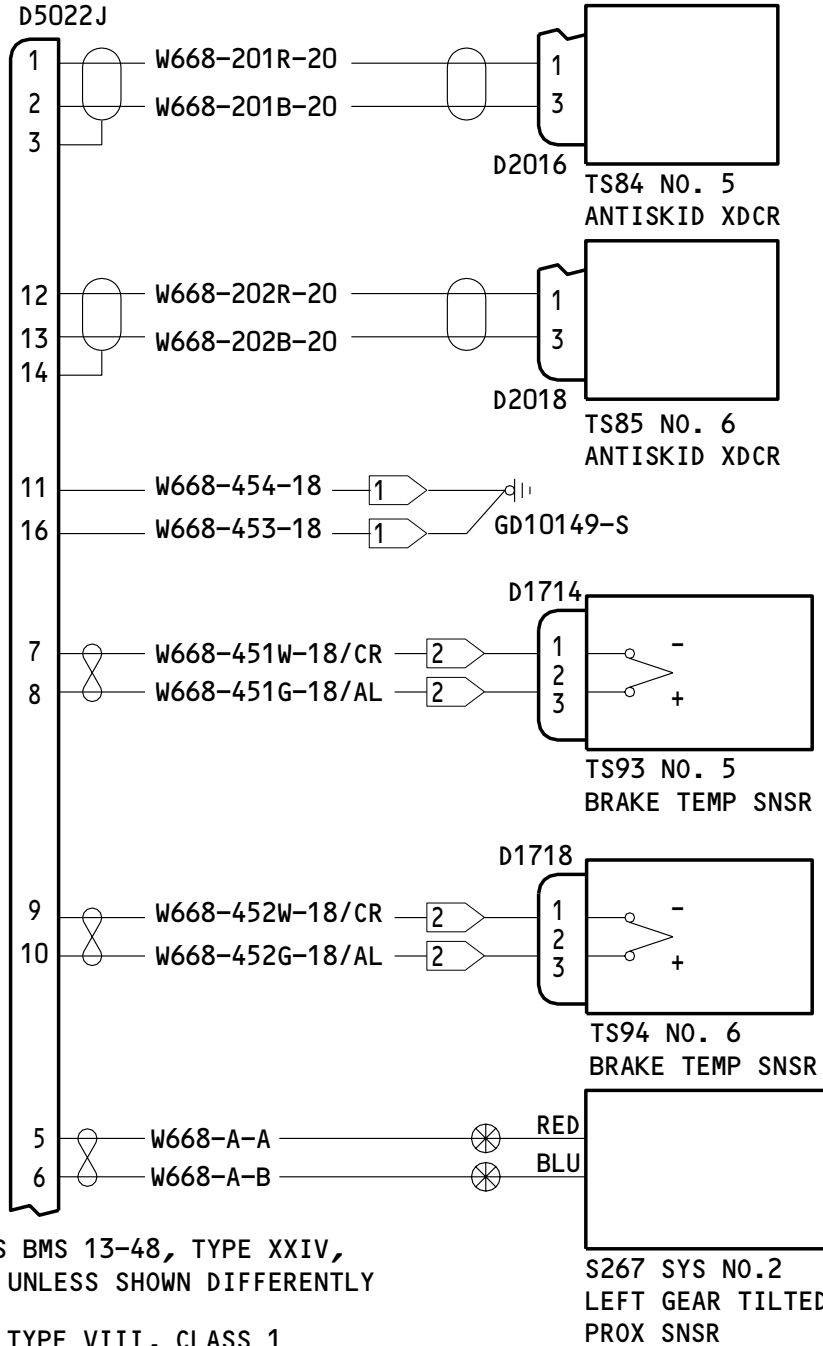
287T6104-4007,-4008



287T6104-4009,-4010

Main Landing Gear Wire Harness Assembly, Schematic Diagram
 Figure 101

32-10-53

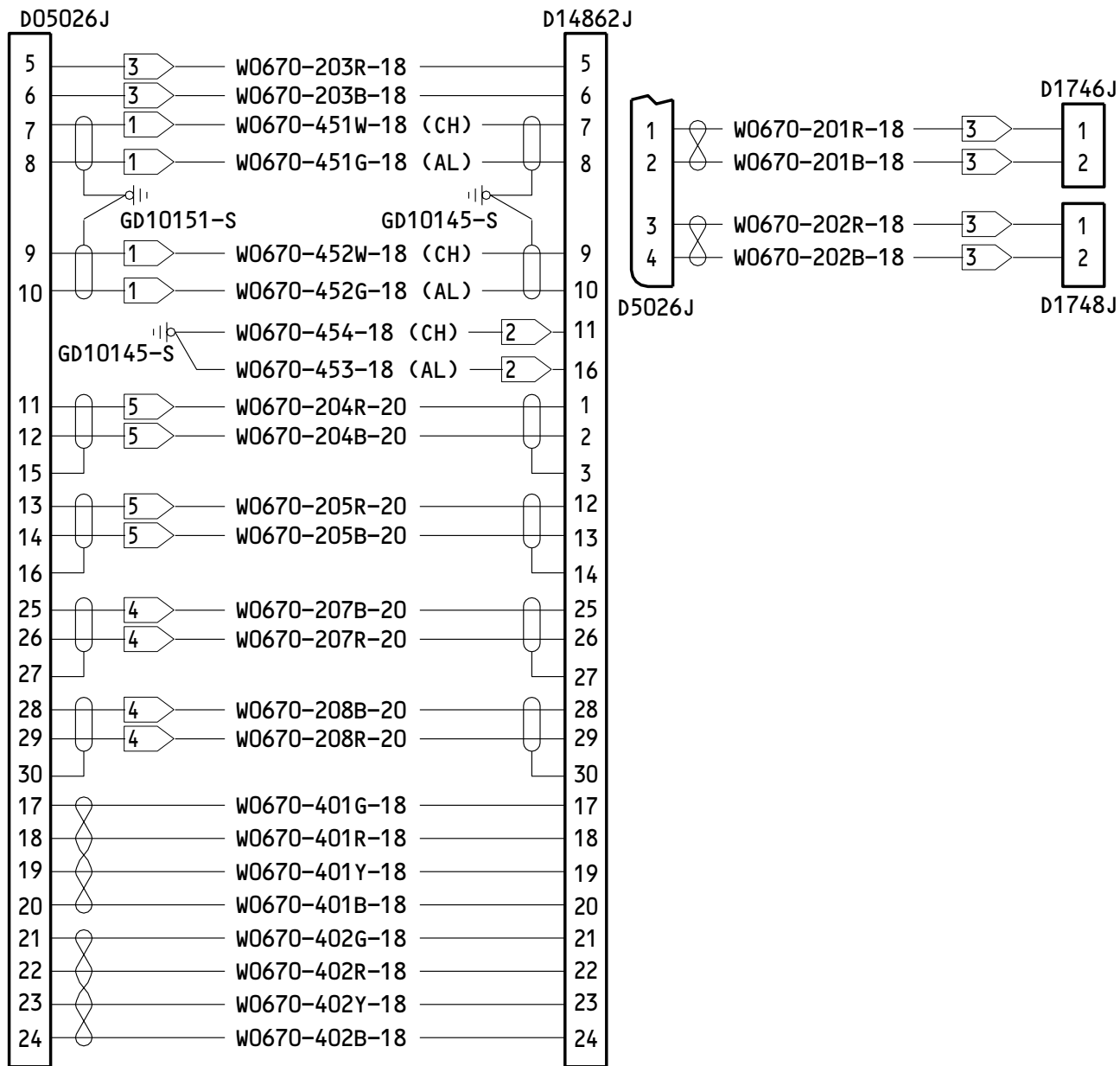


NOTE: ALL WIRES BMS 13-48, TYPE XXIV, CLASS 2, UNLESS SHOWN DIFFERENTLY

- 1 BMS 13-48, TYPE VIII, CLASS 1
- 2 55A8081-18-9,
RAYCHEM CORPORATION,
300 CONSTITUTION DRIVE,
MENLO PARK, CALIFORNIA 94025

286T0668-0AG
Main Landing Gear Wire Harness Assembly, Wire Bundle
Figure 102

32-10-53



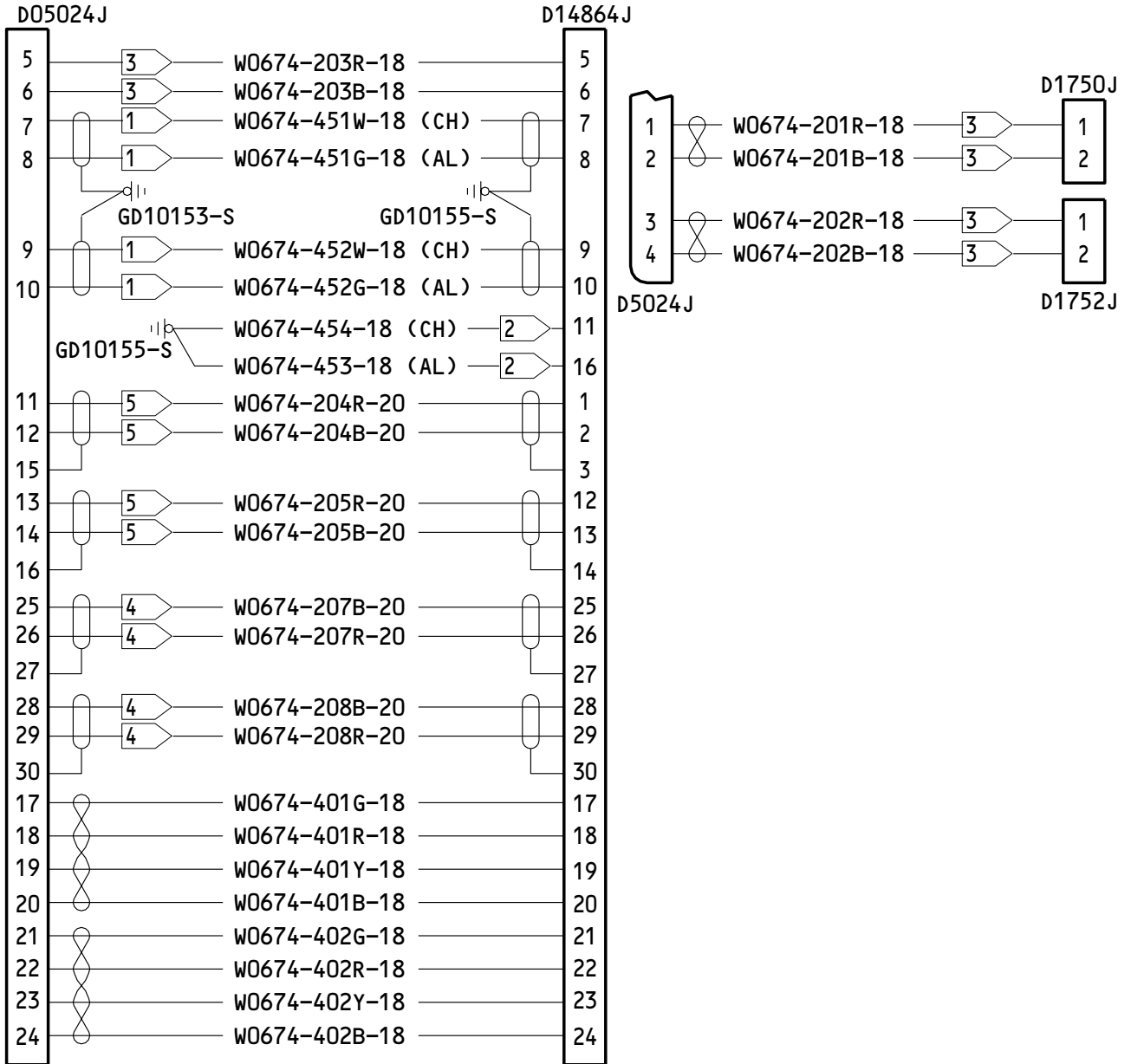
NOTE: ALL WIRES BMS 13-48, TYPE XXII, CLASS 4, UNLESS SHOWN DIFFERENTLY

1) CTC-0062(-)-9/5-9,
 RAYCHEM CORPORATION,
 300 CONSTITUTION DRIVE,
 MENLO PARK, CALIFORNIA 94025

2) BMS 13-48, TYPE VIII, CLASS 1
 3) BMS 13-48, TYPE XXII, CLASS 2
 4) BMS 13-48, TYPE XII, CLASS 2
 5) BMS 13-48, TYPE XXIV, CLASS 2

286T0670-OAF
 Main Landing Gear Wire Harness Assembly, Wire Bundle
 Figure 103

32-10-53



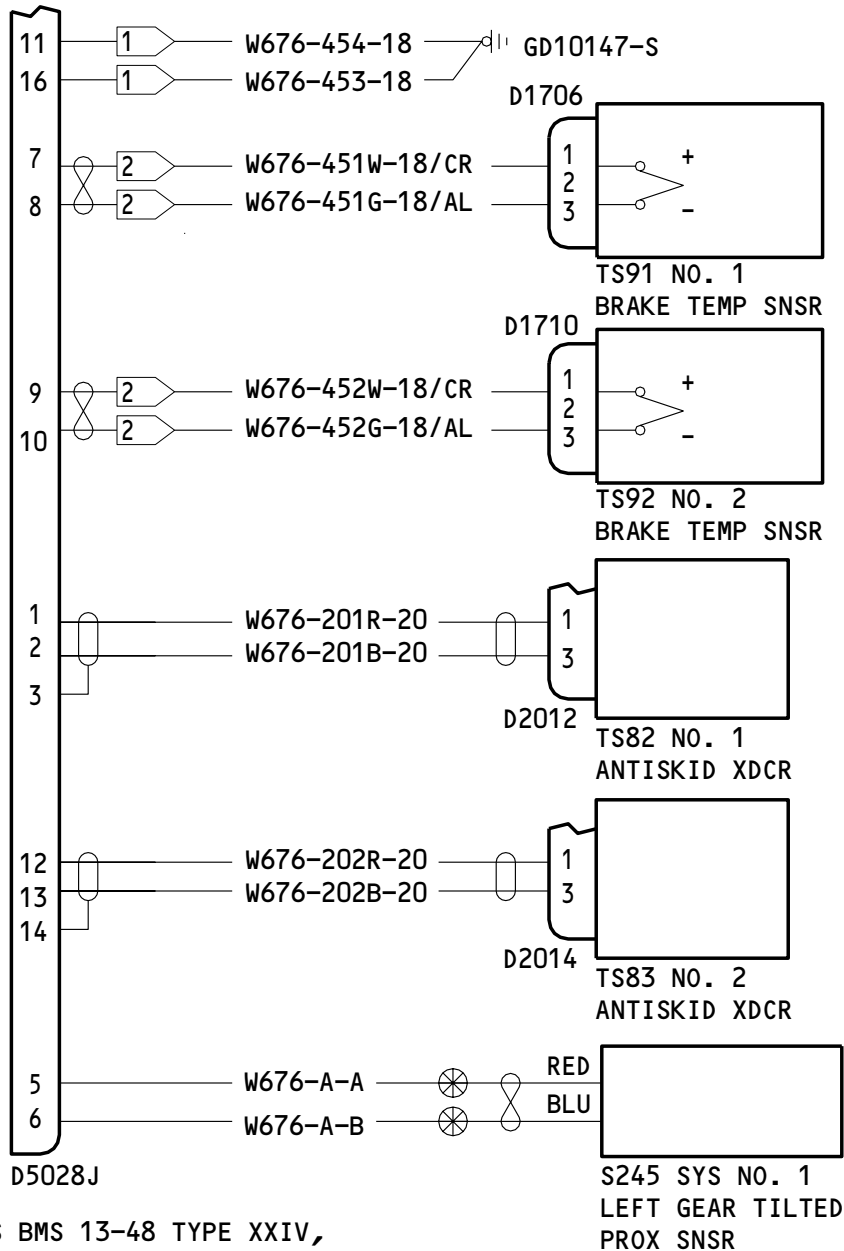
NOTE: ALL WIRES BMS 13-48, TYPE XXII, CLASS 4, UNLESS SHOWN DIFFERENTLY

1) CTC-0062-()-9/5-9,
RAYCHEM CORPORATION,
300 CONSTITUTION DRIVE,
MENLO PARK, CALIFORNIA 94025

2) BMS 13-48, TYPE VIII, CLASS 1
3) BMS 13-48, TYPE XXII, CLASS 2
4) BMS 13-48, TYPE XII, CLASS 2
5) BMS 13-48, TYPE XXIV, CLASS 2

286T0674-0AF
Main Landing Gear Wire Harness Assembly, Wire Bundle
Figure 104

32-10-53

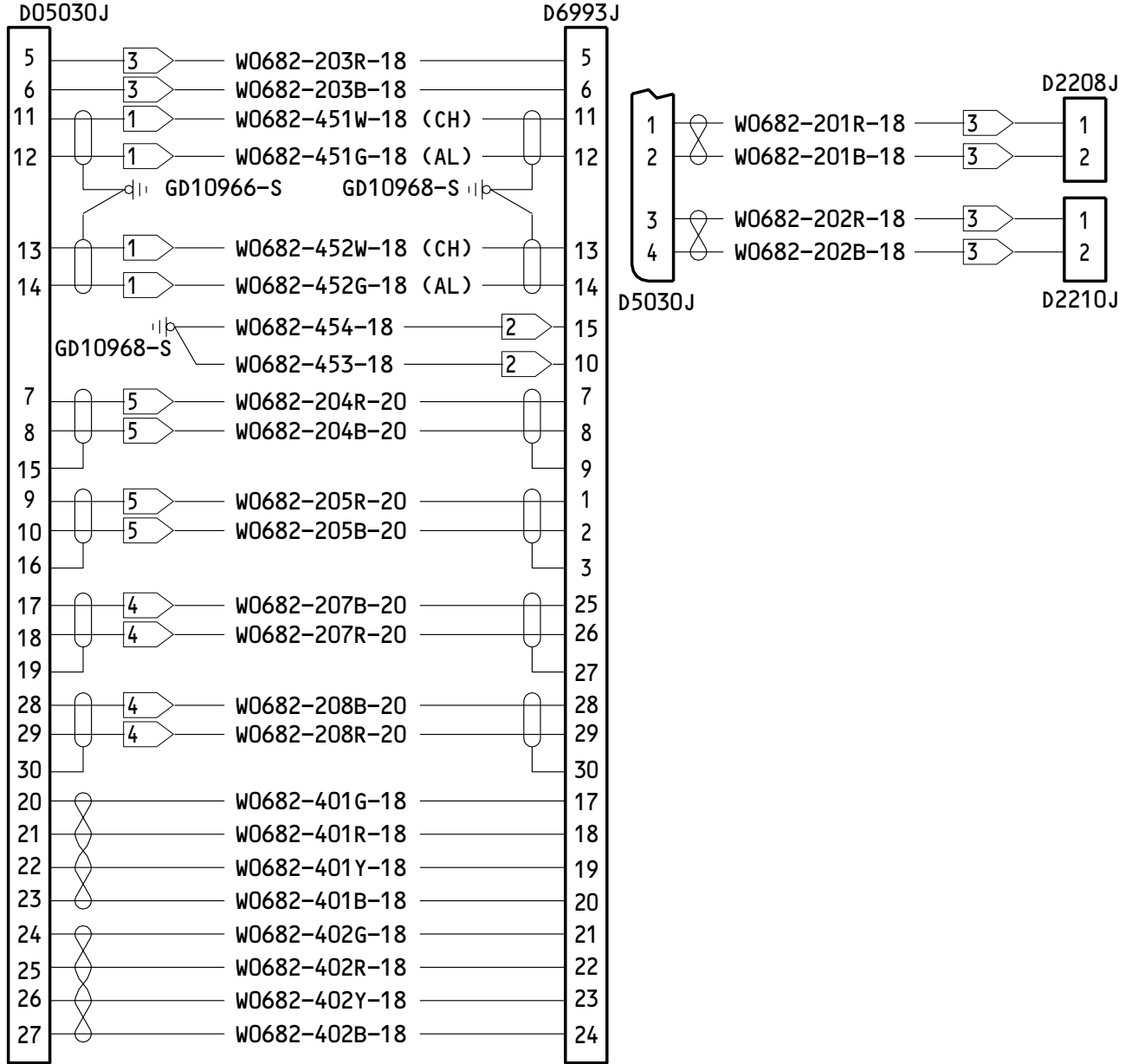


NOTE: ALL WIRES BMS 13-48 TYPE XXIV,
 CLASS 2 UNLESS SHOWN DIFFERENTLY.

- 1 BMS 13-48 TYPE VIII, CLASS 1.
- 2 55A8081-18-9,
 RAYCHEM CORPORATION,
 300 CONSTITUTION DRIVE,
 MENLO PARK, CALIFORNIA 94025

286T0676-0AG
 Main Landing Gear Wire Harness Assembly, Wire Bundle
 Figure 105

32-10-53



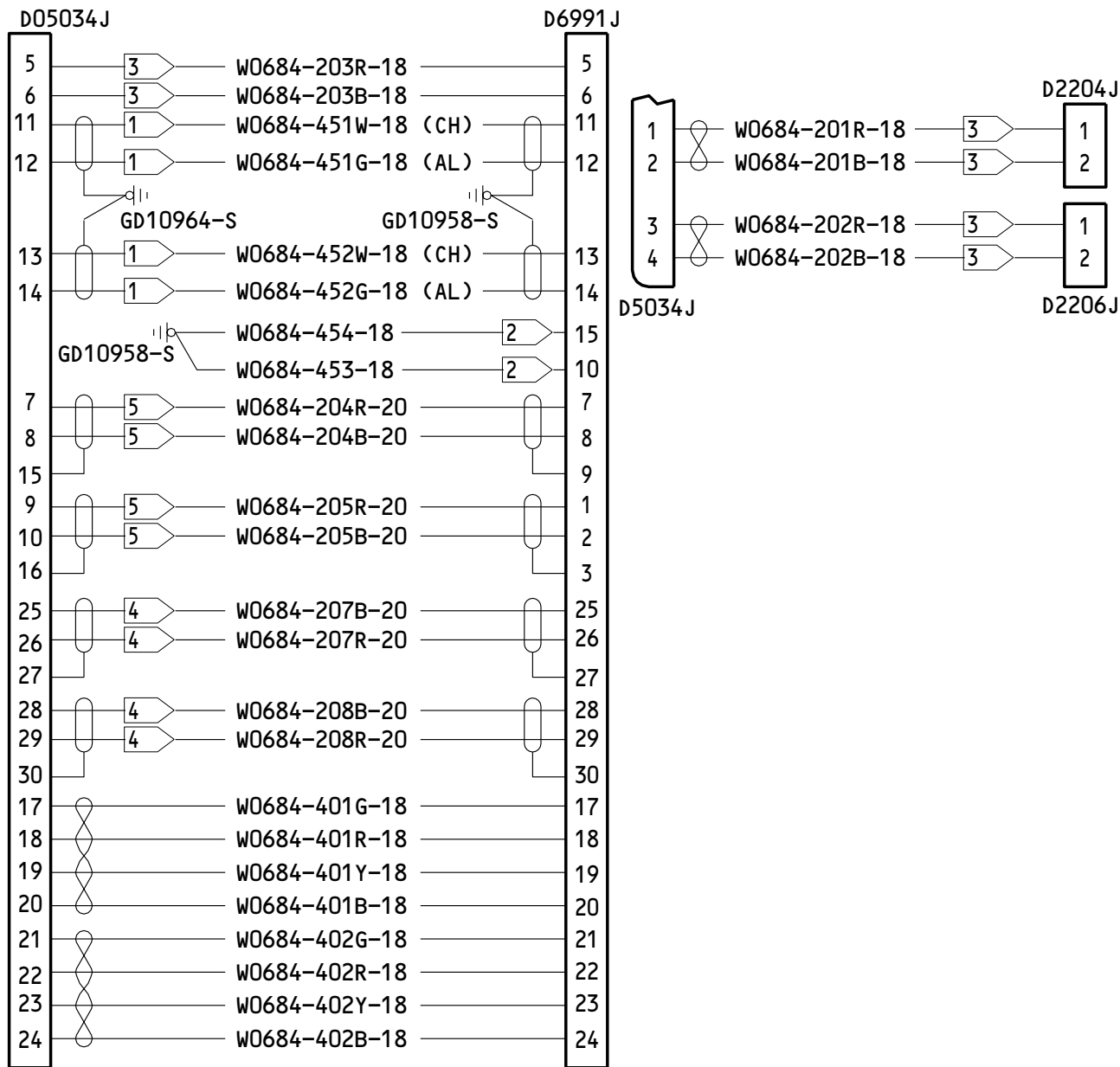
NOTE: ALL WIRES BMS 13-48, TYPE XXII, CLASS 4, UNLESS SHOWN DIFFERENTLY

1) CTC-0062-()-9/5-9,
RAYCHEM CORPORATION,
300 CONSTITUTION DRIVE,
MENLO PARK, CALIFORNIA 94025

- 2) BMS 13-48, TYPE VIII, CLASS 1
- 3) BMS 13-48, TYPE XXII, CLASS 2
- 4) BMS 13-48, TYPE XII, CLASS 2
- 5) BMS 13-48, TYPE XXIV, CLASS 2

286T0682-0AF
Main Landing Gear Wire Harness Assembly, Wire Bundle
Figure 106

32-10-53



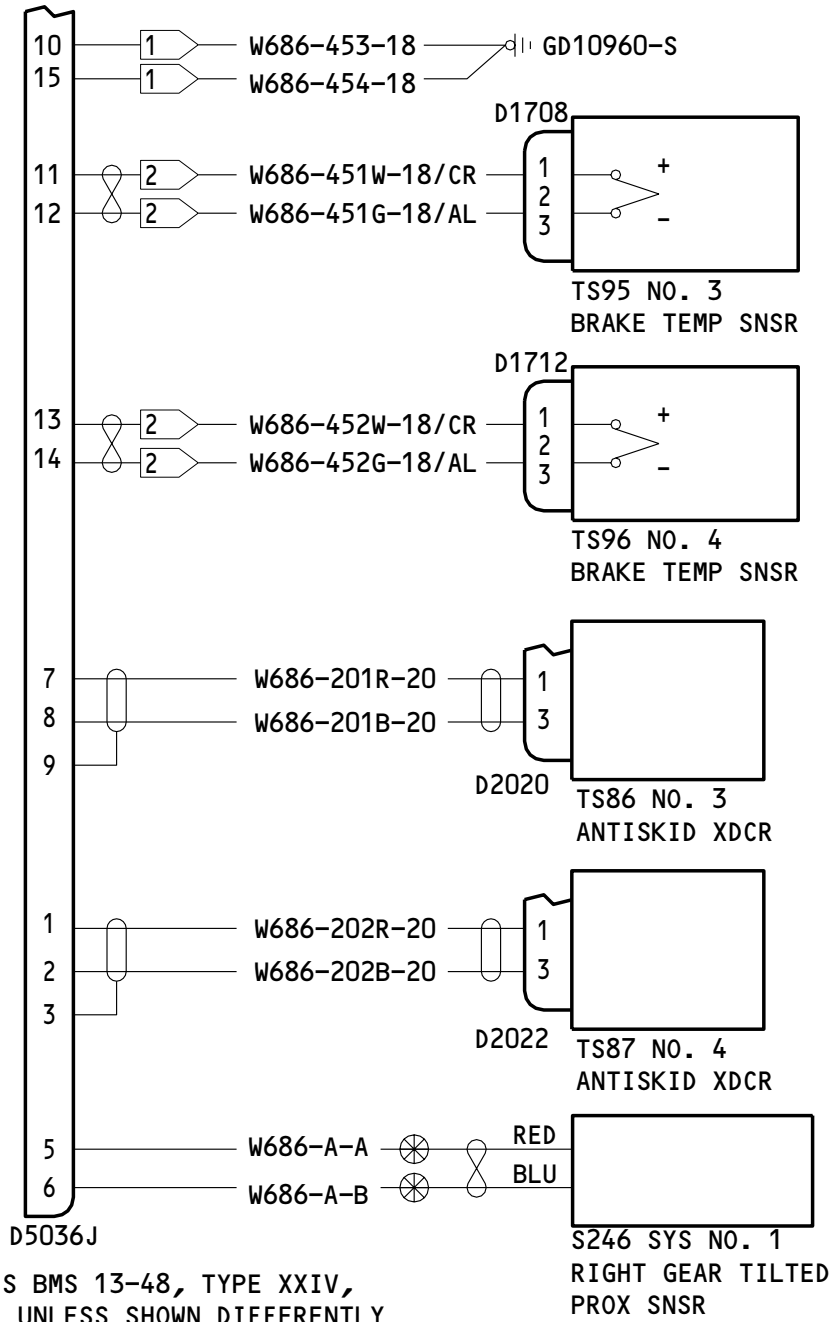
NOTE: ALL WIRES BMS 13-48, TYPE XXII, CLASS 4, UNLESS SHOWN DIFFERENTLY

1 CTC-0062-()-9/5-9,
 RAYCHEM CORPORATION,
 300 CONSTITUTION DRIVE,
 MENLO PARK, CALIFORNIA 94025

2 BMS 13-48, TYPE VIII, CLASS 1
 3 BMS 13-48, TYPE XXII, CLASS 2
 4 BMS 13-48, TYPE XII, CLASS 2
 5 BMS 13-48, TYPE XXIV, CLASS 2

286T0684-OAF
 Main Landing Gear Wire Harness Assembly, Wire Bundle
 Figure 107

32-10-53

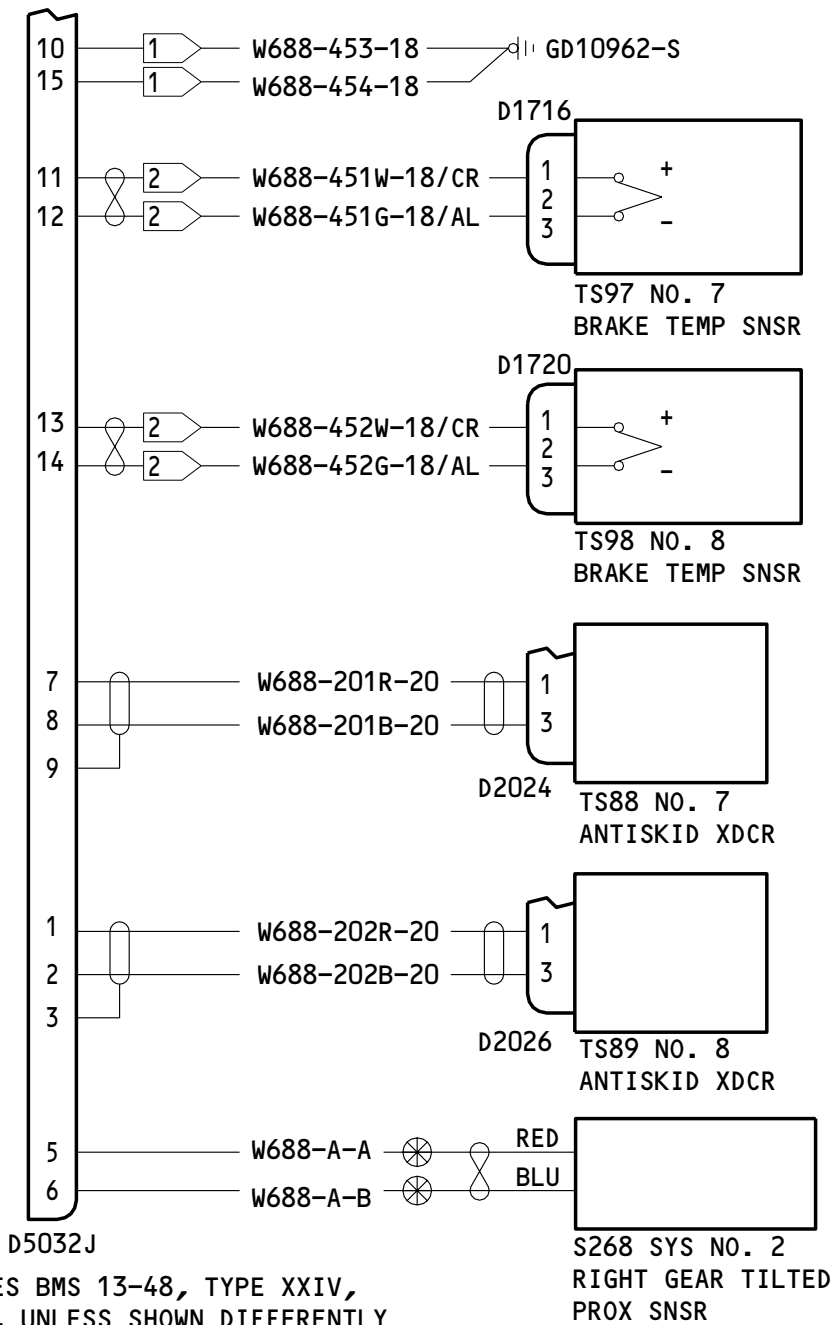


1 BMS 13-48, TPE VIII, CLASS 1

2 55A8081-18-9,
RAYCHEM CORPORATION,
300 CONSTITUTION DRIVE,
MENLO PARK, CALIFORNIA 94025

286T0686-0AG
Main Landing Gear Wire Harness Assembly, Wire Bundle
Figure 108

32-10-53

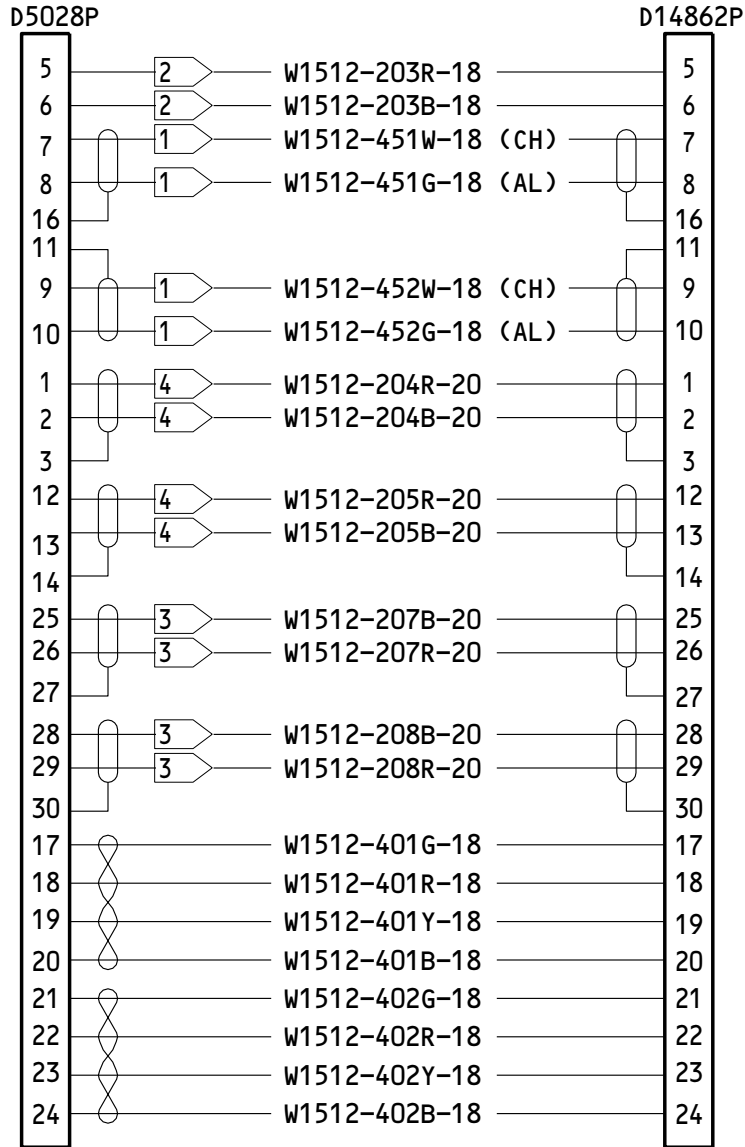


1 BMS 13-48, TPE VIII, CLASS 1

2 55A8081-18-9,
 RAYCHEM CORPORATION,
 300 CONSTITUTION DRIVE,
 MENLO PARK, CALIFORNIA 94025

286T0688-0AG
 Main Landing Gear Wire Harness Assembly, Wire Bundle
 Figure 109

32-10-53



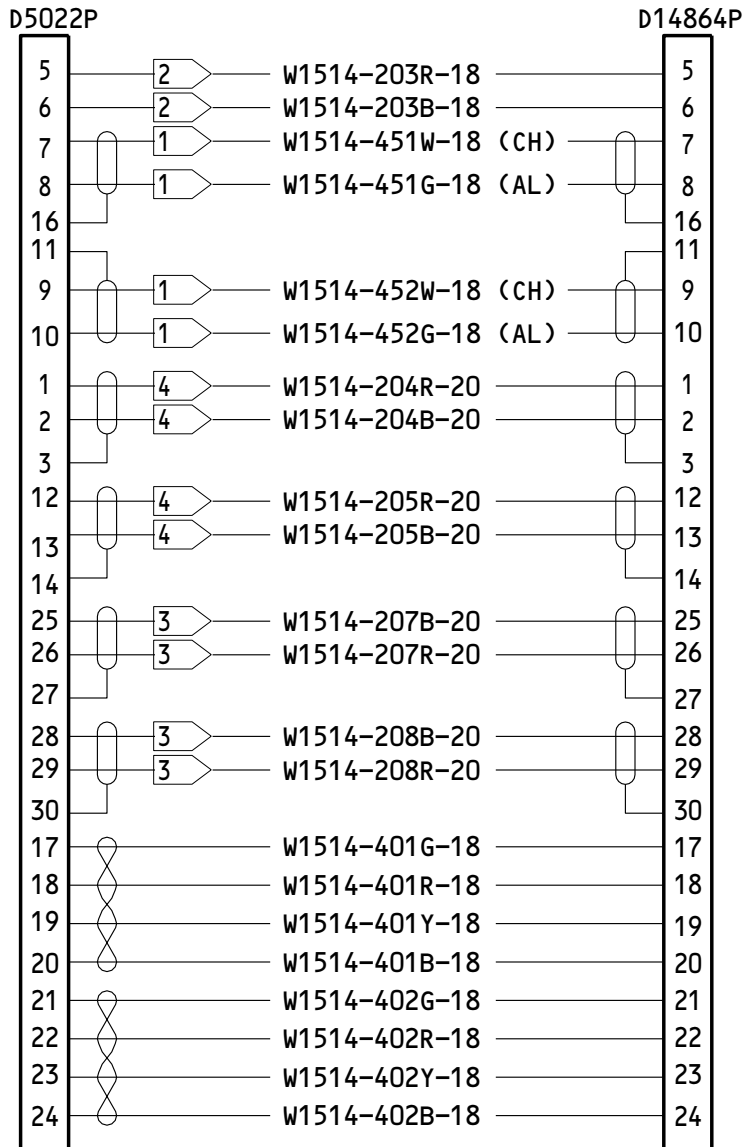
NOTE: ALL WIRES BMS 13-48, TYPE XXII, CLASS 4, UNLESS SHOWN DIFFERENTLY.

1) CTC-0062-()-9/5-9,
RAYCHEM CORPORATION,
300 CONSTITUTION DRIVE,
MENLO PARK, CALIFORNIA 94025

2) BMS 13-48, TYPE XXII, CLASS 2
3) BMS 13-48, TYPE XII, CLASS 2
4) BMS 13-48, TYPE XXIV, CLASS 2

286T1512-0AF
Main Landing Gear Wire Harness Assembly, Wire Bundle
Figure 110

32-10-53



NOTE: ALL WIRES BMS 13-48, TYPE XXII, CLASS 4, UNLESS SHOWN DIFFERENTLY.

1 CTC-0062-()-9/5-9,
 RAYCHEM CORPORATION,
 300 CONSTITUTION DRIVE,
 MENLO PARK, CALIFORNIA 94025

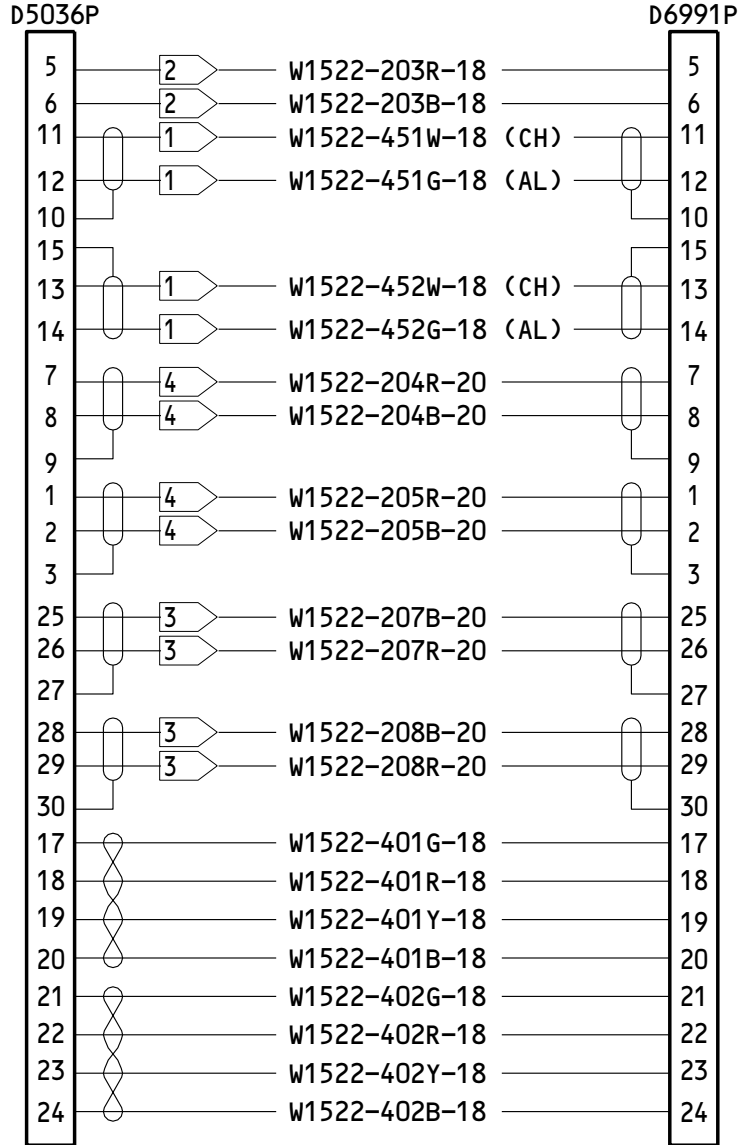
2 BMS 13-48, TYPE XXII, CLASS 2

3 BMS 13-48, TYPE XII, CLASS 2

4 BMS 13-48, TYPE XXIV, CLASS 2

286T1514-0AF
 Main Landing Gear Wire Harness Assembly, Wire Bundle
 Figure 111

32-10-53



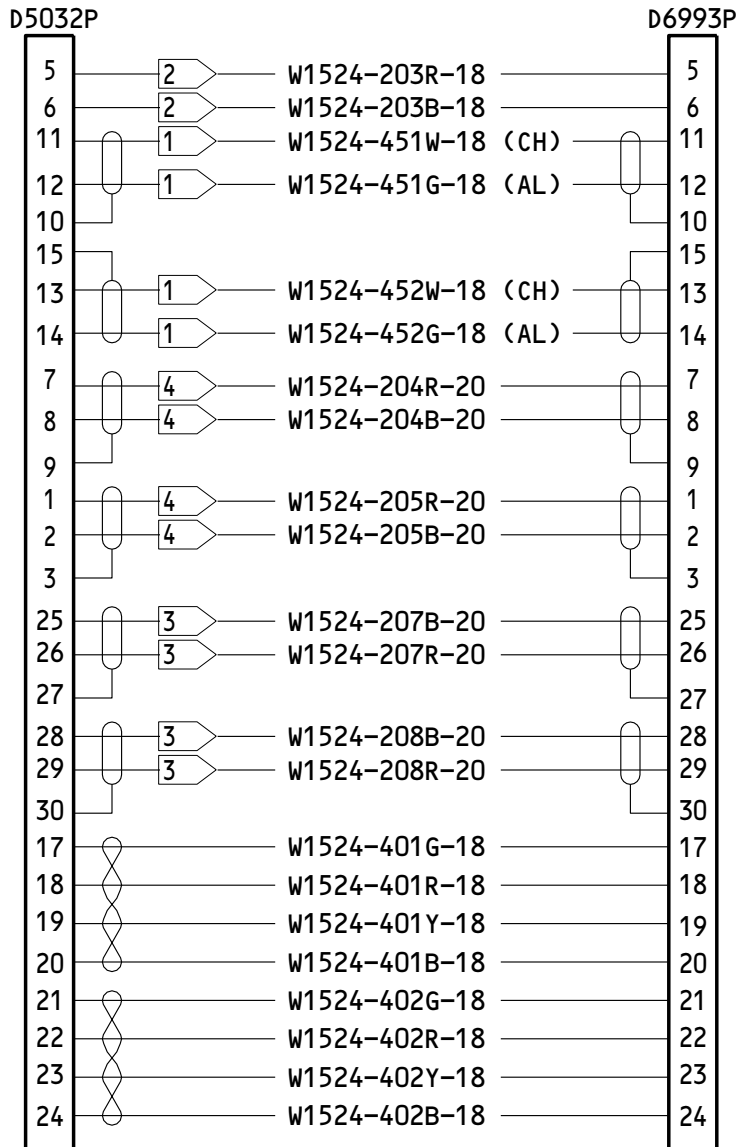
NOTE: ALL WIRES BMS 13-48, TYPE XXII, CLASS 4, UNLESS SHOWN DIFFERENTLY.

1) CTC-0062-()-9/5-9,
RAYCHEM CORPORATION,
300 CONSTITUTION DRIVE,
MENLO PARK, CALIFORNIA 94025

2) BMS 13-48, TYPE XXII, CLASS 2
3) BMS 13-48, TYPE XII, CLASS 2
4) BMS 13-48, TYPE XXIV, CLASS 2

286T1522-0AF
Main Landing Gear Wire Harness Assembly, Wire Bundle
Figure 112

32-10-53



NOTE: ALL WIRES BMS 13-48, TYPE XXII, CLASS 4, UNLESS SHOWN DIFFERENTLY.

1 CTC-0062-()-9/5-9,
 RAYCHEM CORPORATION,
 300 CONSTITUTION DRIVE,
 MENLO PARK, CALIFORNIA 94025

2 BMS 13-48, TYPE XXII, CLASS 2

3 BMS 13-48, TYPE XII, CLASS 2

4 BMS 13-48, TYPE XXIV, CLASS 2

286T1524-0AF
 Main Landing Gear Wire Harness Assembly, Wire Bundle
 Figure 113

32-10-53

REPAIR – GENERAL

1. Materials

- A. Sealant -- Loctite sealant (SOPM 20-60-04).
- B. Primer -- BMS 10-11, type 1 (SOPM 20-60-02).
- C. Enamel -- BMS 10-60, type 1, Boeing color 707 gray gloss enamel.
- D. Sleeve
 - (1) Blue (opt Black), Yellow Thermofit RT-876 (size as required)
(Raychem Corp, 300 Constitution Drive, Menlo Park, California 94025)
 - (2) TFE-2X and TFE-4X (Norton Performance Plastics, 150 Dey Road, Wayne,
New Jersey 07470-4670)
- E. Lockwire -- MS20995NC32

2. All repair may be accomplished with standard industry practices and procedures contained in SOPM 20-11-04 except as follows:

- A. When you replace the damaged wires, use the existing wire to find the length of replacement. Measure the extra wire length and cut to the necessary length after installation.
 - (1) Use wire size and identification as specified in the schematic diagram. All wires must be permanently and legible marked with applicable numbers.
 - (2) Replace all damaged connectors, refer to SOPM 20-11-02, 20-11-03.
 - (3) Replace the wire bundle tags as follows:
 - (a) Imprint, use IBM black ribbon P/N 1356000, the complete wire bundle part number and dash number on the identification sleeve, RT-876 BLUE.
 - (b) Two methods can be used to install the bundle tag:
 - 1) Method 1: Install the identification sleeve RT-876 BLUE over the wire bundle by shrinking sleeve (SOPM 20-11-03).

NOTE: Do not locate the sleeving over the bundle ties.

32-10-53

REPAIR-GENERAL

01

Page 601

Jul 01/00

- 2) Method 2: Use bundle tie wrap, tightly wrapped around both ends of the identification sleeve RT-876 BLUE.
- B. When you replace the connectors D01706, D01708, D01710, D01712, D01714, D01716, D01718, D01720, D1746J, D01748J, D01750J, D01752J, D02012, D02014, D02016, D02018, D02020, D02022, D02024, D02026, D02204J, D02206J, D02208J, D02210J, D05022J, D05022P, D05024J, D05026J, D05028J, D05028P, D05030J, D05032J, D05032P, D05034J, D05036J, D05036P, D06991J, D06991P, D06993J, D06993P, D14862J, D14862P, D14864J or D14864P, install spare contacts and seal plug in all unused connectors contact cavities per SOPM 20-11-02. Install the insulation build-up sleeves, if required, on all wires in the connectors.
- C. When you remove or replace the conduit (Fig. 1-70; Fig. 9-65), bond the mating surface of the elbow of the conduit to the J-Box (Fig. 1-35, -40; Fig. 9-135, -140) per SOPM 20-11-03.
- D. When you remove or replace the cover (Fig. 1-20, -55; Fig. 9-155), bond to the J-Box (Fig. 1-35, -40L; Fig. 9-135, -140) per SOPM 20-11-03.
- E. When you remove or replace the connectors D1746, D1748, D1750, D1752, D2204, D2206, D2208, D2210, D6991, D6993, D14862J or D14864J, bond the mating surface of the connector to the J-Box (Fig. 1-130; Fig. 9-25) per SOPM 20-11-03.
- F. When you remove or replace the box fitting (Fig. 1-80), bond the mating surface of the box fitting to the J-Box (Fig. 1-130) per SOPM 20-11-03.
- G. When you remove or replace nut (Fig. 1-75) or the coupling nut of conduit (Fig. 1-70), install lockwire MS20995C32 per SOPM 20-50-02.
- H. When you remove or replace the grounding terminal (Fig. 6-165), torque the self-locking nut (Fig. 6-175) to 230-280 lb-in.
- I. When you remove or replace the conduit (Fig. 4-25, -25A), tighten the coupling nut and then install lockwire per SOPM 20-50-02.
- J. When you remove or replace conduits (Fig. 4-10, -10A; Fig. 5-90; Fig. 6-90) or elbows (Fig. 5-85, -95; Fig. 6-85, -95), install filler (Fig. 4-40) within conduit or elbow to obtain 75% fill.
- K. When you remove or replace the cover assembly (Fig. 5-20, -20A; Fig. 6-20, -20A), wet install fasteners (Fig. 5-10; Fig. 6-10) per Fig. 601, use BMS 5-95.

32-10-53

REPAIR-GENERAL

01.1

Page 602

Mar 01/01

- L. When you replace the wiring inside J-Box (Fig. 5-120, -125; Fig. 6-130, -135), install protective sleeve RT-876 or TFE 2X or TFE 4X, around the wire in the area of the J-Box pass through as follows:
- (1) Select a protective sleeve that has these properties:
 - (a) The temperature grade of the sleeve material is compatible with the installation temperature grade.
 - (b) The diameter of the sleeve is large enough to make a minimum overlap of 0.5 inch when wrapped around the wire bundle.
 - (2) Cut the protective sleeve to the correct length.
 - (3) Cut the sleeve longitudinally.
 - (4) Wrap the sleeve around wire bundle.

NOTE: Make sure that the edge of the sleeve makes a minimum overlap of 0.5 inch with the outer edge of the sleeve.
 - (5) Tie the protective sleeve in place.

NOTE: Make sure that the distance from the tie to the end of the protective is 0.5 inch and maximum space between the ties is 2.00 ±0.25 inch.
- M. When you remove or replace the connector D5022J, D5028J, D5032J or D5036J, do the following:
- (1) Clean the contact area per SOPM 20-11-03.
 - (2) Bond and check resistance per SOPM 20-11-03 (resistance between mating surface is 5mV or less).
 - (3) Fay surface per SOPM 20-50-19, use BMS 5-95 (fairs in and squeezes out to fill gap).
 - (4) Wet installs the fasteners per Fig. 601.
 - (5) Touch up damaged finishes outside electrically bonded area as follows:
 - (a) Apply two coats of BMS 10-11, type I primer per SOPM 20-41-02.
 - (b) Apply BMS 10-60, type I, Boeing color 707 gray gloss enamel.

32-10-53

REPAIR-GENERAL

01

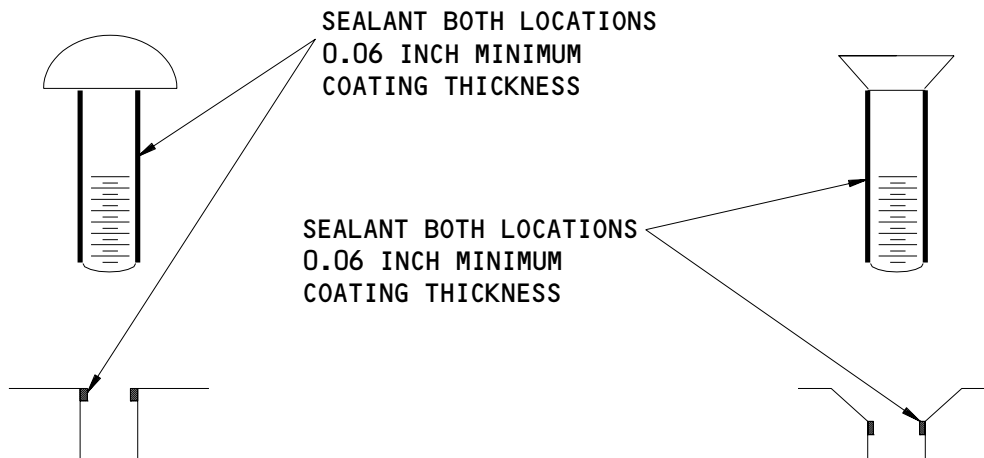
Page 603

Jul 01/00

N. When you replace the connector D2012, D2014, D2016, D2018, D2020, D2022, D2024 or D2026, do the shield termination to connector (See Fig. 602) as follows (if required):

- (1) Increase the diameter of the wires between the shield termination and connector using RT-876 (yellow), stock 1/4 heat shrink sleeving.
- (2) Use addition RT-876 (yellow), stock 1/4 sleeving, as necessary, to increase the bundle diameter to the internal of TFE-2X sleeve diameter.
- (3) Shrink indicated length of RT-876 (yellow), stock 3/8 sleeve over the connector end of the TFE-2X flexible tubing as shown and position under the connector cable clamp.
- (4) Shrink sleeving per SOPM 20-11-03.

NOTE: The finished assembly shall not allow the TFE-2X flexible tubing sleeve to be pulled from cable clamp. Use additional 1.5 inch length of RT-876 (yellow), stock 3/8 sleeve, if required.



Wet Installation of Fasteners
Figure 601

L17219

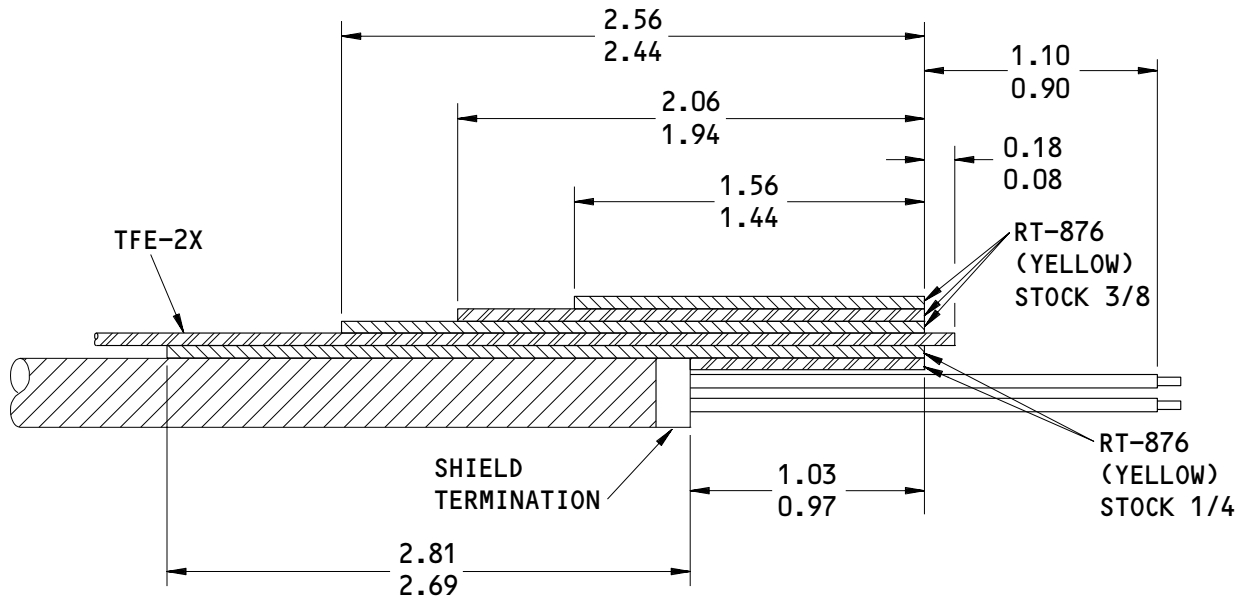
32-10-53

REPAIR-GENERAL

01

Page 604

Jul 01/00



ALL DIMENSIONS ARE IN INCHES

Detail of Shield Termination to Connector
Figure 602

32-10-53

REPAIR-GENERAL

01

Page 605

Jul 01/00

L16441

ILLUSTRATED PARTS LIST

1. This section lists and illustrates replaceable or repairable component parts. The Illustrated Parts Catalog contains a complete explanation of the Boeing part numbering system.

2. Indentures show parts relationships as follows:

Assembly

Detail Parts for Assembly

Subassembly

Attaching Parts for Subassembly

Detail Parts for Subassembly

Detail Installation Parts (Included only if installation parts may be returned to shop as part of assembly)

3. One use code letter (A, B, C, etc.) is assigned in the EFF CODE column for each variation of top assembly. All listed parts are used on all top assemblies except when limitations are shown by use code letter opposite individual part entries.

4. Letter suffixes (alpha-variants) are added to item numbers for optional parts, Service Bulletin modification parts, configuration differences (Except left- and right-hand parts), product improvement parts, and parts added between two sequential item numbers. The alpha-variant is not shown on illustrations when appearance and location of all variants of the part is the same.

5. Service Bulletin modifications are shown by the notations PRE SB XXXX and POST SB XXXX.

A. When a new top assembly part number is assigned by Service Bulletin, the notations appear at the top assembly level only. The configuration differences at detail part level are then shown by use code letter.

B. When the top assembly part number is not changed by the Service Bulletin, the notations appear at the detail part level.

6. Parts Interchangeability

Optional
(OPT)

The parts are optional to and interchangeable with other parts having the same item number.

Supersedes, Superseded By
(SUPSDS, SUPSD BY)

The part supersedes and is not interchangeable with the original part.

Replaces, Replaced By
(REPLS, REPLD BY)

The part replaces and is interchangeable with, or is an alternate to, the original part.

7. The MOD level codes in the nomenclature column, such as MOD A and MOD B, identify interchangeable top assemblies which have the same part number but which have differences at the subassembly or component levels. The IPL identifies each MOD level of a top assembly with a different item number and use code. The nameplate label identifies the MOD level of each assembly in the MOD LEVEL block.
8. Use substitute parts only as specified in the document D906-10182, Electrical/Electronic/Electromechanical and Mechanical Parts Substitution.

32-10-53ILLUSTRATED PARTS LIST
01 Page 1002
Jul 01/00

VENDORS

OPTK6 SPS TECHNOLOGIES INC AEROSPACE PRODUCTS DIV
5195 W 4700 SPO BOX 18459
KEARNS, UTAH 84118

05593 ICORE INTERNATIONAL INC
3780 FLIGHTLINE DR
SANTA ROSA, CALIFORNIA 95403
FORMERLY IN SANTA CLARA AND SUNNYVALE, CALIFORNIA

06725 AIR INDUSTRIES CORPORATION
12570 KNOTT STREET
GARDEN GROVE, CALIFORNIA 92641-3932
FORMERLY AIR INDUSTRIES OF CALIF IN GARDENA, CALIF.

06950 SCREWCORP VSI AEROSPACE PRODUCTS DIV FAIRCHILD IND DIV
13001 EAST TEMPLE AVENUE PO BOX 730
CITY OF INDUSTRY, CALIFORNIA 91746-1417
FORMERLY VB0096 AND VSI CORP SCREWCORP DIV
FORMERLY IN CULVER CITY, CALIFORNIA

08748 ELDEC CORPORATION
16700 13TH PLACE WEST PO BOX 100
LYNNWOOD, WASHINGTON 98036
FORMERLY ELECTRO DEVELOPMENT CORPORATION
FORMERLY IN SEATTLE, WASHINGTON FORMERLY VB0043

11815 CHERRY AEROSPACE FASTENERS DIV OF TEXTRON
1224 EAST WARNER AVENUE PO BOX 2157
SANTA ANA, CALIFORNIA 92707-0157
FORMERLY IN LOS ANGELES, CALIF, FORMERLY CHERRY FASTENERS
TOWNSEND DIV OF TEXTRON INC V71087

15653 FAIRCHILD FASTENERS KAYNAR PRODUCTS DIV
800 S STATE COLLEGE BLVD
FULLERTON, CALIFORNIA 92831-3001
FORMERLY VK6405 MICRODOT AEROSP LTD; FORMERLY KAYNAR TECH
KAYNAR DIV

17446 HUCK INTL INC AEROSPACE FASTENER DIV
900 WATSON CENTER ROAD
CARSON, CALIFORNIA 90745-4201
FORMERLY V32134 REXNORD INC; FORMERLY V97928 HUCK INTL

18076 UMPCO, INCORPORATED
7100 LAMPSON AVENUE PO BOX 5158
GARDEN GROVE, CALIFORNIA 92645
FORMERLY IN CITY OF INDUSTRY, CALIFORNIA

32-10-53

ILLUSTRATED PARTS LIST
01.1 Page 1003
Mar 01/03

VENDORS

22175 J AND M PRODUCTS INC.
2435 NORTH NAOMI
BURBANK, CALIFORNIA 91504-3425

30463 DCX-CHOL ENTERPRISE INC ELECSYS DIV
225 ENTERPRISE DR
PEKIN, ILLINOIS 61554
FORMERLY BREEZE-ILLINOIS INC; TRANSTECHNOLOGY ELECTRONICS;
FORMERLY ELECSYS INC

52828 REPUBLIC FASTENER MFG CORP
1300 RANCHO CONEJO BLVD
NEWBURY PARK, CALIFORNIA 91320-1405
FORMERLY IN SYLMAR, CALIFORNIA

56878 SPS TECHNOLOGIES INC AEROSPACE AND INDUSTRIAL PRODUCTS DIV
HIGHLAND AVENUE
JENKINTOWN, PENNSYLVANIA 19046
FORMERLY STANDARD PRESSED STEEL

60516 WEST COAST AEROSPACE INC
812 MIRAFLORES STREET
SAN PEDRO, CALIFORNIA 90731-1439

72962 HARVARD INDUSTRIES INC
3 WERNER WAY SUITE 210
LEBANON, NEW JERSEY 08833
FORMERLY AMERACE CORP ESNA DIV
FORMERLY ELASTIC STOP NUT IN UNION, NJ

73197 HI-SHEAR TECHNOLOGY CORP
2600 SKYPARK DRIVE
TORRANCE, CALIFORNIA 90509

80539 SPS TECHNOLOGIES INC AEROSPACE PRODUCTS DIV
2701 SOUTH HARBOR BOULEVARD PO BOX 1259
SANTA ANA, CALIFORNIA 92702-1259
FORMERLY NUTT-SHEL DIV OF SPC WESTERN CO V80539
AND STANDARD PRESSED STEEL WESTERN DIV V17279

83930 ADEL WIGGINS GROUP
5000 TRIGGS STREET
LOS ANGELES, CALIFORNIA 90022
FORMERLY ADEL PROD DIV OF DELAVAL TURBINE CALIF INC;
FORMERLY EXACTO IND V72285; FORMERLY DELAVAL ADEL FSTN DIV
FORMERLY TRANSAMERICA DELAVAL ADEL FTNRS DIV; FORMERLY IMO
DELAVAL IN HUNTINGTON, WV

32-10-53

ILLUSTRATED PARTS LIST
01.1 Page 1004
Mar 01/03

VENDORS

84971 TA MFG CO SUB OF ESTERLINE
28065 W FRANKLIN PKY
VALENCIA, CALIFORNIA 91355
FORMERLY IN LA, CALIF; SUB OF CRITON CORP, GLENDALE, CALIF

9N513 VOI SHAN/CHATSWORTH DIV OF VSI CORP SUB OF FAIRCHILD IND
CHATSWORTH, CALIFORNIA 91311-5013
COMPANY NO LONGER WISHES TO BE CONSIDERED FOR FED CONTRCTG

92215 FAIRCHILD IND INC FAIRCHILD AEROSPACE FASTENER DIV
3010 W LOMITA BLVD
TORRANCE, CALIFORNIA 90505-5102
FORMERLY VOI-SHAN IN CULVER CITY, CALIF

97928 HUCK INTL SEE V17446 HUCK INTL
SEE V17446 HUCK INTL

32-10-53

ILLUSTRATED PARTS LIST
01.1 Page 1005
Mar 01/03

PART NUMBER	AIRLINE PART NO.	FIG.	ITEM	TTL REQ
BACBNX8K5X		6	145	4
BACB3ONX8K4X		5	130	2
		6	140	2
BACB3ONX8K5X		5	135	4
BACC10GE4A		5	45	1
		6	40	1
BACC10GE5A		6	45	1
BACC10GE6A		5	40	1
BACC30BH8		5	140	6
		6	150	6
BACC63BP12B3PN		2	10	1
		3	10A	1
BACC63BP12B3P7		2	10A	1
		3	10	1
BACN10JC04CM		1	110	16
		9	105	8
		9	120	8
BACN10JC06CM		1	30	8
		1	125	8
		5	55	4
		6	55	4
		6	65	4
		9	90	8
		9	175	8
BACN10KJ3		1	145	4
		9	40	4
BACN10WW6C		5	70	2
		6	75	2
BACR15BB3A		1	135	17
		9	30	17
BACR15BB6A		1	140	4
		9	35	4
BACS12GU3K8		5	35	2
		6	35	2
BRH10C06M		1	30	8
		1	125	8
		5	55	4
		6	55	4
		6	65	4
		9	90	8
		9	175	8
BRH1110C04M		1	110	16
		9	105	8
		9	120	8
HL1022AZ8-4		5	130	2
		6	140	2

32-10-53

 ILLUSTRATED PARTS LIST
 01.1 Page 1006
 Mar 01/03

PART NUMBER	AIRLINE PART NO.	FIG.	ITEM	TTL REQ
HL1022AZ8-5		5	135	4
HL1087-8		5	140	6
		6	150	6
HL112AZ8-4		5	130	2
		6	140	2
HL112AZ8-5		5	135	4
H01-04BAC		1	110	16
		9	105	8
		9	120	8
H01-06BAC		1	30	8
		1	125	8
		5	55	4
		6	55	4
		6	65	4
		9	90	8
		9	175	8
JM44LC13WD4R		5	45	1
		6	40	1
JM44LC13WD5A		6	45	1
JM44LC13WD6R		5	40	1
MF6000-3		1	145	4
		9	40	4
MS35333-76		6	170	1
NAS1057W4A010		5	145	3
		6	160	3
NAS1149CN416CR		1	105	16
		9	100	8
NAS1149CN416R		9	115	8
NAS1149CN616R		1	120	8
		9	85	8
NAS1149D0363J		1	90	4
		9	15	4

32-10-53

ILLUSTRATED PARTS LIST
01.1 Page 1007
Mar 01/03

PART NUMBER	AIRLINE PART NO.	FIG.	ITEM	TTL REQ
NAS1149E0316P		1	150	4
		9	45	4
NAS1149E0332R		1	15	8
		1	50	4
		5	15	20
		6	15	20
		9	130	4
		9	150	4
NAS1801-3-6		1	85	4
		9	10	4
NAS1802-04-6		1	100	16
		9	95	8
		9	110	8
NAS1802-06-6		1	25	8
		1	115	8
		9	80	8
		9	170	8
NAS1802-06-7		5	50	4
NAS1802-06-7		6	50	4
NAS1802-3-8		6	60	4
		1	10	8
		1	45	4
		5	10	20
		6	10	20
		9	125	4
NS202101SE40		9	145	4
		1	110	16
		9	105	8
NS202101SE62		9	120	8
		1	30	8
		1	125	8
		5	55	4
		6	55	4
		6	65	4
		9	90	8
		9	175	8

32-10-53

 ILLUSTRATED PARTS LIST
 01.1 Page 1008
 Mar 01/03

PART NUMBER	AIRLINE PART NO.	FIG.	ITEM	TTL REQ
S283T006-28		2	25A	1
		3	25	1
		5	80	1
S287T001-4501		1	70	1
S287T001-4503		2	15	1
S287T001-4505		3	15	1
S287T001-4507		2	20	1
S287T001-4509		3	20A	1
S287T001-4511		4	10	1
S287T001-4513		4	10A	1
S287T001-4515		4	25	1
		7	10	1
S287T001-4517		4	25A	1
		8	10	1
S287T001-4519		4	35	1
		7	15	1
S287T001-4521		4	35A	1
		8	15	1
S287T001-4523		5	100	1
		6	80	1
S287T001-4524		5	60A	1
		6	110	1
S287T001-4531		5	75	1
S287T001-4533		6	100	1
S287T001-4534		8	20A	1
S287T001-4535		7	20A	1
S287T006-28		6	105	1
S369WDH4		5	45	1
		6	40	1
S369WHD5		6	45	1
S369WHD6		5	40	1
TA12C32WD4		5	45	1
		6	40	1

32-10-53

PART NUMBER	AIRLINE PART NO.	FIG.	ITEM	TTL REQ
TA12C32WD5		6	45	1
TA12C32WD6		5	40	1
T6C440JM		1	110	16
		9	105	8
		9	120	8
T6C632JM		1	30	8
		1	125	8
		5	55	4
		6	55	4
		6	65	4
		9	90	8
		9	175	8
VN303D40		1	110	16
		9	105	8
		9	120	8
VN303D62		1	30	8
		1	125	8
		5	55	4
		6	55	4
		6	65	4
		9	90	8
		9	175	8
109LH9075-40W		1	110	16
		9	105	8
		9	120	8
109LH9075-62W		1	30	8
		1	125	8
		5	55	4
		6	55	4
		6	65	4
		9	90	8
		9	175	8
254871-4501		1	70A	1
254871-4501		9	65	1
254871-4511		4	10	1
254871-4513		4	10A	1
254871-4515		4	25	1
254871-4517		4	25A	1
254871-4519		4	35	1
254871-4521		4	35A	1
254871-4523		5	100A	1
		6	80A	1
254871-4524		5	60A	1
254871-4525		6	110A	1
254871-4531		5	75A	1
254871-4533		6	100A	1
254871-4534		8	20A	1

32-10-53

 ILLUSTRATED PARTS LIST
 01.1 Page 1010
 Mar 01/03

PART NUMBER	AIRLINE PART NO.	FIG.	ITEM	TTL REQ
254871-4535		7	20A	1
28-12S20KC		1	80	1
		9	75	1
286T0668-OAF		6	200	1
286T0668-OAG		6	190	1
286T0670-OAF		1	170	1
		9	180	1
286T0674-OAF		1	175	1
		9	185	1
286T0676-OAF		5	165	1
286T0676-OAG		5	175	1
286T0682-OAF		1	180	1
		9	190	1
286T0684-OAF		9	195	1
286T0686-OAF		5	170	1
286T0686-OAG		5	180	1
286T0688-OAF		6	205	1
286T0688-OAG		6	195	1
286T1512-OAF		4	60	1
		8	45	1
286T1514-OAF		4	45	1
		7	45	1
286T1521-OAF		4	50	1
286T1522-OAF		4	55	1
		8	50	1
286T1524-OAF		7	50	1
287T0684-OAF		1	185	1
287T6104-18		4	40	1
		7	40	1
		8	40	1
287T6104-4001		1	1A	RF
287T6104-4002		1	5	RF
287T6104-4003		1	1B	RF
		2	1A	RF
287T6104-4004		1	5A	RF
		2	5	RF
287T6104-4005		1	1C	RF
		3	1A	RF
287T6104-4006		1	5B	RF
		3	5	RF
287T6104-4007		1	1D	RF
		2	1B	RF

32-10-53

ILLUSTRATED PARTS LIST
01.1 Page 1011
Mar 01/03

PART NUMBER	AIRLINE PART NO.	FIG.	ITEM	TTL REQ
287T6104-4008		1	5C	RF
		2	5A	RF
287T6104-4009		1	1E	RF
		3	1B	RF
287T6104-4010		1	5D	RF
		3	5A	RF
287T6104-4011		1	1F	RF
		4	1A	RF
287T6104-4012		1	5E	RF
		4	5	RF
287T6104-4013		1	1G	RF
		4	1B	RF
287T6104-4014		1	5F	RF
		4	5A	RF
287T6104-4015		1	1H	RF
		5	1A	RF
287T6104-4016		1	5G	RF
		5	5	RF
287T6104-4017		1	1J	RF
		6	1A	RF
287T6104-4018		1	5H	RF
		6	5	RF
287T6104-4019		1	1K	RF
		5	1B	RF
287T6104-4020		1	5J	RF
		5	5A	RF
287T6104-4021		1	1L	RF
		6	1B	RF
287T6104-4022		1	5K	RF
		6	5A	RF
287T6104-4025		1	1P	RF
287T6104-4026		1	5P	RF
287T6104-4027		1	1M	RF
		5	1C	RF
287T6104-4028		1	5M	RF
		5	5B	RF

32-10-53

 ILLUSTRATED PARTS LIST
 01.1 Page 1012
 Mar 01/03

PART NUMBER	AIRLINE PART NO.	FIG.	ITEM	TTL REQ
287T6104-4029		1	1N	RF
		6	1C	RF
287T6104-4030		1	5N	RF
		6	5C	RF
287T6104-4031		1	1Q	RF
		7	1A	RF
287T6104-4032		1	5Q	RF
		7	5	RF
287T6104-4033		1	1R	RF
		8	1A	RF
287T6104-4034		1	5R	RF
		8	5	RF
287T6104-4035		1	1S	RF
		9	1A	RF
287T6104-4036		1	5S	RF
		9	5	RF
287T6104-42		5	105	1
		6	115	1
287T6104-43		5	110	1
		6	120	1
287T6104-44		5	115	1
		6	125	1
287T6105-4		1	95	1
		9	20	1
287T6105-4001		1	130	1
		9	25	1
287T6105-8		1	165	1
		9	60	1
287T6107-4001		1	35	1
287T6107-4002		1	40	1
287T6107-4003		9	135	1
287T6107-4004		9	140	1
287T6111-31		5	65	2
		6	70	2

32-10-53

PART NUMBER	AIRLINE PART NO.	FIG.	ITEM	TTL REQ
287T6111-4005		1	155	1
		9	50	1
287T6119-2		1	160	1
		9	55	1
287T6135-1		1	60	1
287T6135-2		1	65	1
287T6135-3		9	160	1
287T6135-4		9	165	1
287T6139-1		4	15A	1
		8	30	1
287T6139-2		4	20A	1
		8	35	1
287T6139-3		4	15	1
		7	30	1
287T6139-4		4	20	1
		7	35	1
287T6139-5		4	30	1
		7	25	1
		8	25	1
287T6139-9		5	90	1
		6	90	1
287T6142-1		5	120	1
287T6142-10		6	135A	1
287T6142-2		5	125	1
287T6142-3		6	130	1
287T6142-4		6	135	1
287T6142-7		5	120A	1
287T6142-8		5	125A	1
287T6142-9		6	130A	1
287T6144-1		5	25	1
		6	25	1

32-10-53

 ILLUSTRATED PARTS LIST
 01.1 Page 1014
 Mar 01/03

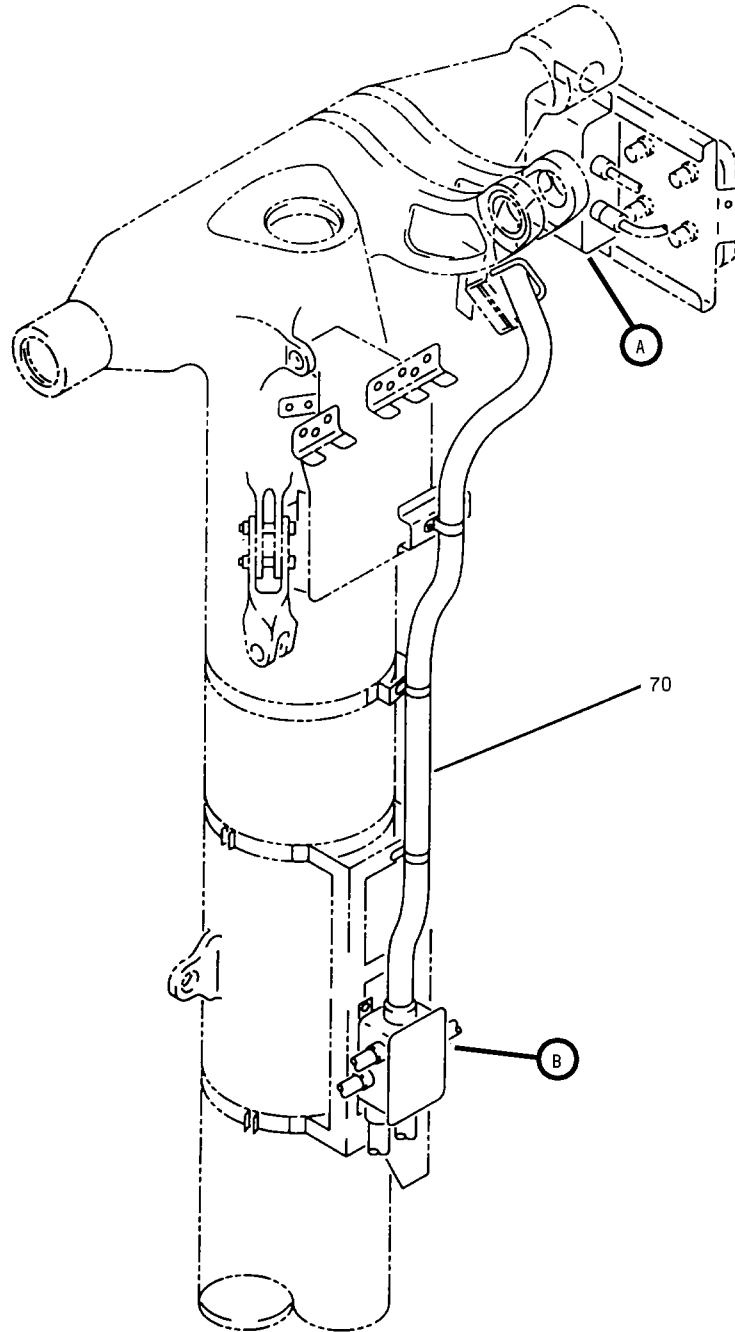
PART NUMBER	AIRLINE PART NO.	FIG.	ITEM	TTL REQ
287T6144-2		5	25A	1
		6	25A	1
287T6146-11		1	20	1
		1	55	1
		9	155	1
287T6147-10		5	30	1
		6	30	1
287T6147-28		5	150A	2
		6	155A	2
287T6147-29		5	30A	1
		6	30A	1
287T6147-8		5	150	2
		6	155	2
287T6148-1		5	155	1
287T6148-10		6	185A	1
287T6148-2		5	160	1
287T6148-3		6	180	1
287T6148-4		6	185	1
287T6148-7		5	155A	1
287T6148-8		5	160A	1
287T6148-9		6	180A	1
287T6149-1		5	20	1
287T6149-1		6	20	1
287T6149-2		5	20A	1
		6	20A	1
287T6150-1		5	85	1
		6	85	1
287T6150-2		5	95	1
		6	95	1
509A4		5	45	1
		6	40	1
509A5		6	45	1
509A6		5	40	1
52NE066		6	175	1
6-2S20KC		1	75	1
		9	70	1
66-18544-1		6	165	1
8-716-01		2	25A	1
		3	25	1
		5	80	1
		6	105	1
97E40		1	110	16
		9	105	8
		9	120	8

32-10-53

ILLUSTRATED PARTS LIST
01.1 Page 1015
Mar 01/03

PART NUMBER	AIRLINE PART NO.	FIG.	ITEM	TTL REQ
97E62		1	30	8
		1	125	8
		5	55	4
		6	55	4
		6	65	4
		9	90	8
		9	175	8

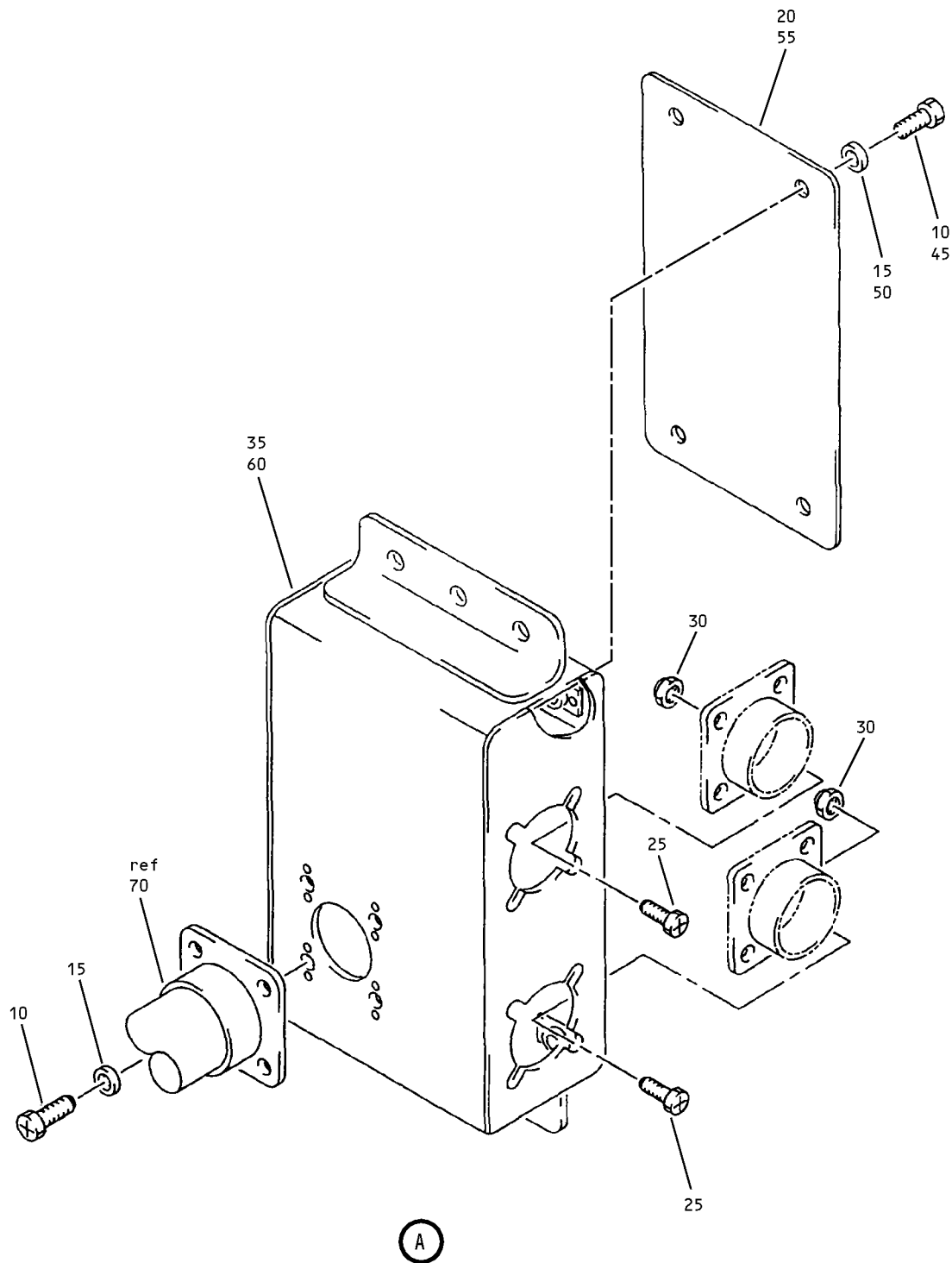
32-10-53



Left Gear, Rear Spar To Oleo Wire Harness Assembly
Figure 1 (Sheet 1)

32-10-53

ILLUSTRATED PARTS LIST
01.1 Page 1017
Mar 01/03

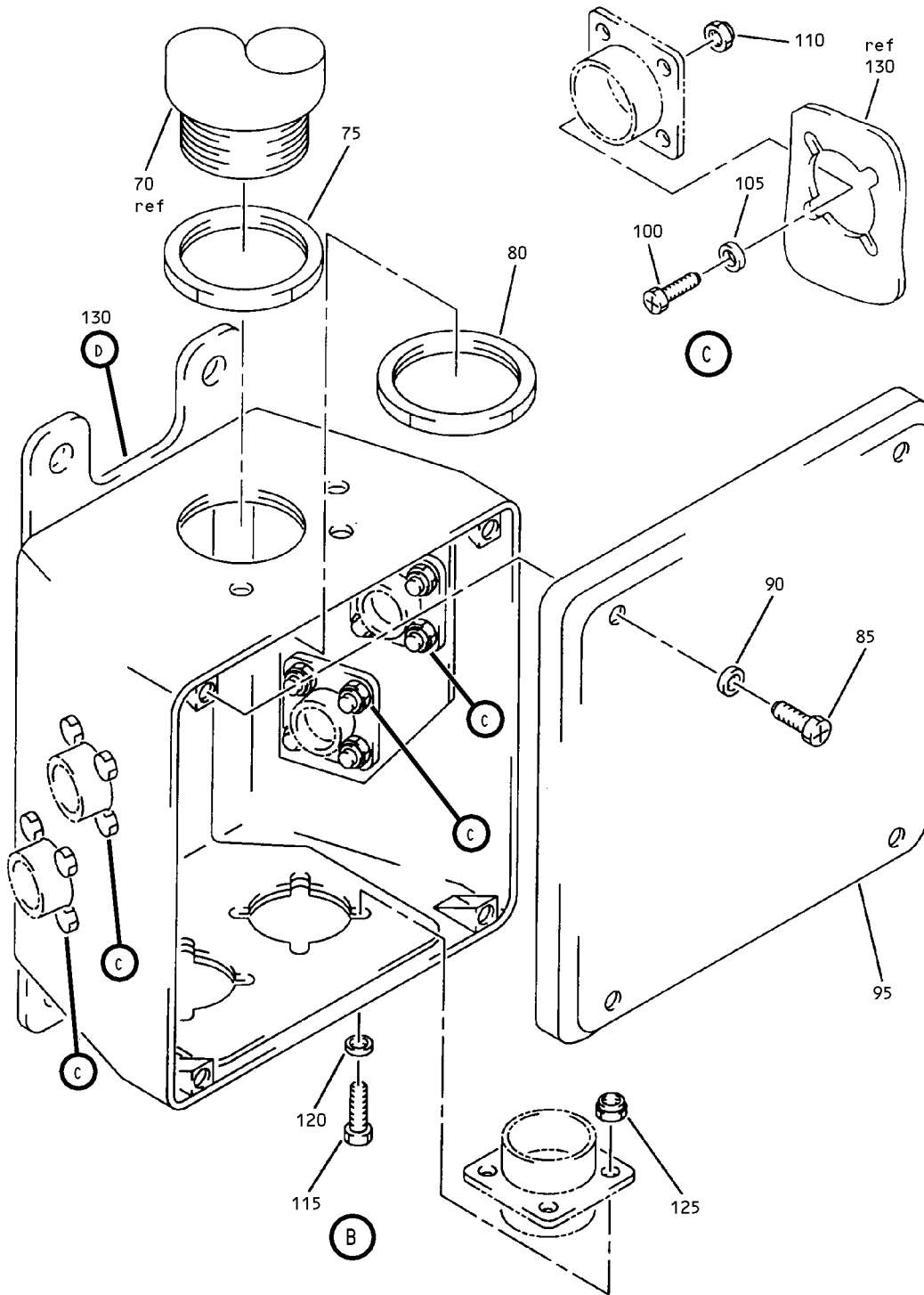


Left Gear, Rear Spar To Oleo Wire Harness Assembly
 Figure 1 (Sheet 2)

32-10-53

ILLUSTRATED PARTS LIST
 01.1 Page 1018
 Mar 01/03

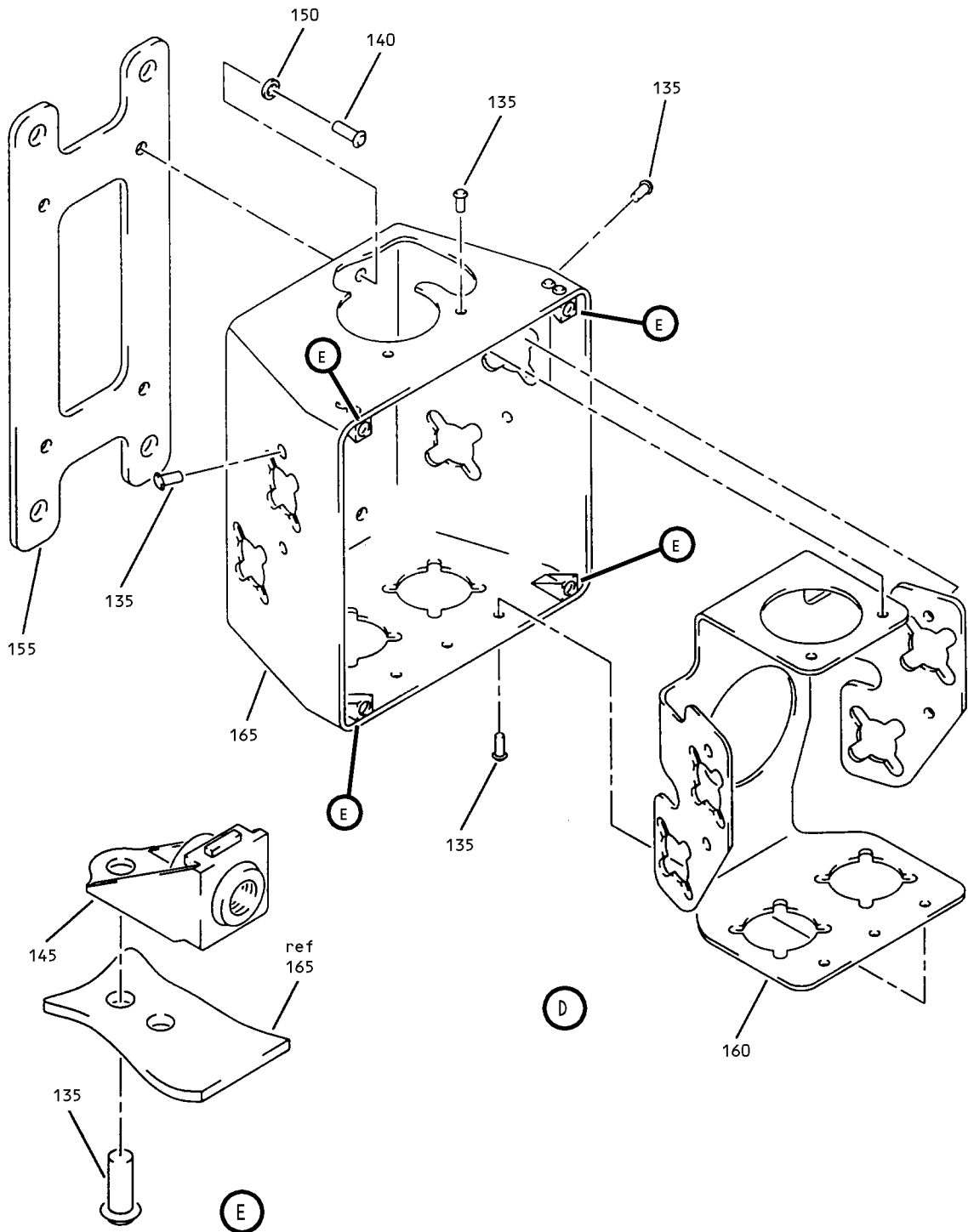
L16709



Left Gear, Rear Spar To Oleo Wire Harness Assembly
Figure 1 (Sheet 3)

32-10-53

ILLUSTRATED PARTS LIST
01.1 Page 1019
Mar 01/03



Left Gear, Rear Spar To Oleo Wire Harness Assembly
 Figure 1 (Sheet 4)

32-10-53

ILLUSTRATED PARTS LIST
 01.1 Page 1020
 Mar 01/03

FIG. & ITEM	PART NO.	AIRLINE PART NUMBER	NOMENCLATURE 1234567	EFF CODE	QTY PER ASSY
01- -1A	287T6104-4001		HARNESS ASSY-WIRE, L GR, REAR SPAR TO OLEO	A	RF
-1B	287T6104-4003		HARNESS ASSY-WIRE, DRAG BRACE. SYS 1, S237 (FOR DETAILS SEE FIG. 2)	C	RF
-1C	287T6104-4005		HARNESS ASSY-WIRE, SIDE BRACE, SYS 2, S258 (FOR DETAILS SEE FIG. 3)	E	RF
-1D	287T6104-4007		HARNESS ASSY-WIRE, DRAG BRACE, SYS 2, S259 (FOR DETAILS SEE FIG. 2)	G	RF
-1E	287T6104-4009		HARNESS ASSY-WIRE, SIDE BRACE, SYS 1, S236 (FOR DETAILS SEE FIG. 3)	J	RF
-1F	287T6104-4011		HARNESS ASSY-WIRE, L GR, LWR OLEO TO AFT TRUCK (FOR DETAILS SEE FIG. 4)	L	RF
-1G	287T6104-4013		HARNESS ASSY-WIRE, L GR, LWR OLEO TO FWD TRUCK (FOR DETAILS SEE FIG. 4)	N	RF
-1H	287T6104-4015		HARNESS ASSY-WIRE, L FWD TRUCK, STD (FOR DETAILS SEE FIG. 5)	Q	RF
-1J	287T6104-4017		HARNESS ASSY-WIRE, L AFT TRUCK, STD (FOR DETAILS SEE FIG. 6)	S	RF
-1K	287T6104-4019		HARNESS ASSY-WIRE, L FWD TRUCK, BRAKE TEMP AND NO TPIS (FOR DETAILS SEE FIG. 5)	U	RF
-1L	287T6104-4021		HARNESS ASSY-WIRE, L AFT TRUCK, BRAKE TEMP AND NO TPIS (FOR DETAILS SEE FIG. 6)	W	RF
-1M	287T6104-4027		HARNESS ASSY-WIRE, L FWD TRUCK, BRAKE TEMP AND NO TPIS (FOR DETAILS SEE FIG. 5)	Z	RF
-1N	287T6104-4029		HARNESS ASSY-WIRE, L AFT TRUCK, BRAKE TEMP AND NO TPIS (FOR DETAILS SEE FIG. 6)	AB	RF
-1P	287T6104-4025		HARNESS ASSY-WIRE, L UPPER OLEO	AD	RF

32-10-53

ILLUSTRATED PARTS LIST
01.1 Page 1021
Mar 01/03

FIG. & ITEM	PART NO.	AIRLINE PART NUMBER	NOMENCLATURE 1234567	EFF CODE	QTY PER ASSY
01- -1Q	287T6104-4031		HARNESS ASSY-WIRE, LWR OLEO TO AFT TRUCK, L MLG (FOR DETAILS SEE FIG. 7)	AF	RF
-1R	287T6104-4033		HARNESS ASSY-WIRE, LWR OLEO TO FWD TRUCK, L MLG (FOR DETAILS SEE FIG. 8)	AH	RF
-1S	287T6104-4035		HARNESS ASSY-WIRE, UPR OLEO L MLG (FOR DETAILS SEE FIG. 9)	AK	RF
-5	287T6104-4002		HARNESS ASSY-WIRE, R GR, REAR SPAR TO OLEO	B	RF
-5A	287T6104-4004		HARNESS ASSY-WIRE, DRAG BRACE, SYS 1, S241 (FOR DETAILS SEE FIG. 2)	D	RF
-5B	287T6104-4006		HARNESS ASSY-WIRE, SIDE BRACE, SYS 2, S262 (FOR DETAILS SEE FIG. 3)	F	RF
-5C	287T6104-4008		HARNESS ASSY-WIRE, DRAG BRACE, SYS 2, S263 (FOR DETAILS SEE FIG. 2)	H	RF
-5D	287T6104-4010		HARNESS ASSY-WIRE, SIDE BRACE, SYS 1, S240 (FOR DETAILS SEE FIG. 3)	K	RF
-5E	287T6104-4012		HARNESS ASSY-WIRE, R GR, LWR OLEO TO AFT TRUCK (FOR DETAILS SEE FIG. 4)	M	RF
-5F	287T6104-4014		HARNESS ASSY-WIRE, R GR, LWR OLEO TO FED TRUCK (FOR DETAILS SEE FIG. 4)	P	RF
-5G	287T6104-4016		HARNESS ASSY-WIRE, R FWD TRUCK, STD (FOR DETAILS SEE FIG. 5)	R	RF
-5H	287T6104-4018		HARNESS ASSY-WIRE, R AFT TRUCK, STD (FOR DETAILS SEE FIG. 6)	T	RF
-5J	287T6104-4020		HARNESS ASSY-WIRE, R FWD TRUCK, BRAKE TEMP AND NO TPIS (FOR DETAILS SEE FIG. 5)	V	RF
-5K	287T6104-4022		HARNESS ASSY-WIRE, R AFT TRUCK, BRAKE TEMP AND NO TPIS (FOR DETAILS SEE FIG. 6)	X	RF
-5L	287T6104-4024		DELETED		

32-10-53

 ILLUSTRATED PARTS LIST
 01.1 Page 1022
 Mar 01/03

BOEING
COMPONENT
MAINTENANCE MANUAL

FIG. & ITEM	PART NO.	AIRLINE PART NUMBER	NOMENCLATURE 1234567	EFF CODE	QTY PER ASSY
01- -5M	287T6104-4028		HARNESS ASSY-WIRE, R FWD TRUCK, BRAKE TEMP AND NO TPIS (FOR DETAILS SEE FIG. 5)	AA	RF
-5N	287T6104-4030		HARNESS ASSY-WIRE, R AFT TRUCK, BRAKE TEMP AND NO TPIS (FOR DETAILS SEE FIG. 6)	AC	RF
-5P	287T6104-4026		HARNESS ASSY-WIRE, R UPPER OLEO	AE	RF
-5Q	287T6104-4032		HARNESS ASSY-WIRE, LWR OLEO TO AFT TRUCK, R MLG, (FOR DETAILS SEE FIG. 7)	AG	RF
-5R	287T6104-4034		HARNESS ASSY-WIRE, LWR OLEO TO FWD TRUCK, R MLG (FOR DETAILS SEE FIG. 8)	AJ	RF
-5S	287T6104-4036		HARNESS ASSY-WIRE, UPR OLEO R MLG (FOR DETAILS SEE FIG. 9)	AL	RF
10	NAS1802-3-8		.SCREW	A,B,A D,AE	8
15	NAS1149E0332R		.WASHER	A,B,A D,AE	8
20	287T6146-11		.COVER	A,B,A D,AE	1
25	NAS1802-06-6		.SCREW	A,B,A D,AE	8
R 30	BRH10C06M		.NUT- (V52828) (SPEC BACN10JC06CM) (OPT T6C632JM (V11815)) (OPT 97E62 (V80539)) (OPT 109LH9075-62W (V72962)) (OPT VN303D62 (V92215)) (OPT NS202101SE62 (V80539)) (OPT H01-06BAC (V15653))	A,B,A D,AE	8

32-10-53

ILLUSTRATED PARTS LIST
01.1 Page 1023
Mar 01/03

FIG. & ITEM	PART NO.	AIRLINE PART NUMBER	NOMENCLATURE 1234567	EFF CODE	QTY PER ASSY
01-					
35	287T6107-4001		.BOX ASSY-J	A,AD	1
-40	287T6107-4002		.BOX ASSY-J	B,AE	1
45	NAS1802-3-8		..SCREW	A,B,A D,AE	4
50	NAS1149E0332R		..WASHER	A,B,A D,AE	4
55	287T6146-11		..COVER	A,B,A D,AE	1
60	287T6135-1		..BOX ASSY	A,AD	1
-65	287T6135-2		..BOX ASSY	A,AD	1
70	S287T001-4501		.CONDUIT ASSY	A,B	1
-70A	254871-4501		.CONDUIT ASSY- (V05593)	AD,AE	1
75	6-2S20KC		.NUT- (V30463)	A,B,A D,AE	1
80	28-12S20KC		.FITTING-BOX (V30463)	A,B,A D,AE	1
85	NAS1801-3-6		.SCREW	A,B,A D,AE	4
90	NAS1149D0363J		.WASHER	A,B,A D,AE	4
95	287T6105-4		.COVER	A,B,A D,AE	1
100	NAS1802-04-6		.SCREW	A,B,A D,AE	16
105	NAS1149CN416CR		.WASHER	A,B,A D,AE	16
110	BRH1110C04M		.NUT- (V52828) (SPEC BACN10JC04CM) (OPT H01-04BAC (V15653)) (OPT NS202101SE40 (V80539)) (OPT VN303D40 (V92215)) (OPT 109LH9075-40W (V72962)) (OPT 97E40 (V80539)) (OPT T6C440JM (V11815))	A,B,A D,AE	16

32-10-53

 ILLUSTRATED PARTS LIST
 01.1 Page 1024
 Mar 01/03

FIG. & ITEM	PART NO.	AIRLINE PART NUMBER	NOMENCLATURE 1234567	EFF CODE	QTY PER ASSY
R	01-115	NAS1802-06-6	.SCREW	A,B,A D,AE	8
	120	NAS1149CN616R	.WASHER	A,B,A D,AE	8
	125	BRH10C06M	.NUT- (V52828) (SPEC BACN10JC06CM) (OPT T6C632JM (V11815)) (OPT 97E62 (V80539)) (OPT 109LH9075-62W (V72962)) (OPT VN303D62 (V92215)) (OPT NS202101SE62 (V80539)) (OPT H01-06BAC (V15653))	A,B,A D,AE	8
	130	287T6105-4001	.BOX ASSY-J	A,B	1
	-130A	287T6105-4002	.BOX ASSY-J	AD,AE	1
	135	BACR15BB3A	..RIVET- (SIZE DETERMINE ON INST)	A,B,A D,AE	17
	140	BACR15BB6A	..RIVET- (SIZE DETERMINE ON INST)	A,B,A D,AE	4
	145	MF6000-3	..NUTPLATE- (V15653) (SPEC BACN10KJ3)	A,B,A D,AE	4
	150	NAS1149E0316P	..WASHER	A,B,A D,AE	4

32-10-53

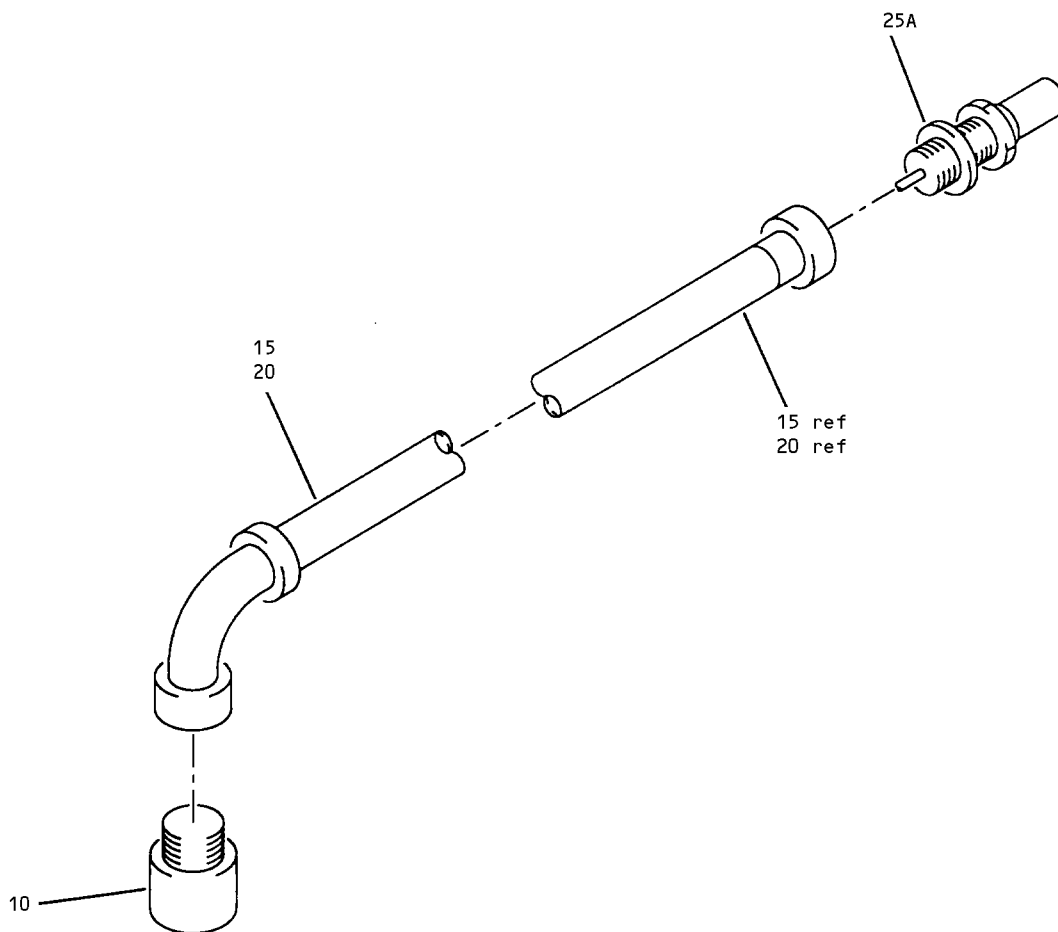
FIG. & ITEM	PART NO.	AIRLINE PART NUMBER	NOMENCLATURE	EFF CODE	QTY PER ASSY
			1234567		
01-155	287T6111-4005		..BRACKET	A,B,A D,AE	1
160	287T6119-2		..LINER	A,B,A D,AE	1
165	287T6105-8		..BOX	A,B,A D,AE	1
-170	286T0670-OAF		.WIRE BUNDLE	A,AD	1
-175	286T0674-OAF		.WIRE BUNDLE	A,AD	1
-180	286T0682-OAF		.WIRE BUNDLE	B,AE	1
-185	287T0684-OAF		.WIRE BUNDLE	B,AE	1
			BOEING LETTER HISTORY		

R

- Item Not Illustrated

32-10-53

 ILLUSTRATED PARTS LIST
 01.1 Page 1026
 Mar 01/03



Drag Brace System 1/2 Wire Harness Assembly
Figure 2

32-10-53

ILLUSTRATED PARTS LIST
01.1 Page 1028
Mar 01/03

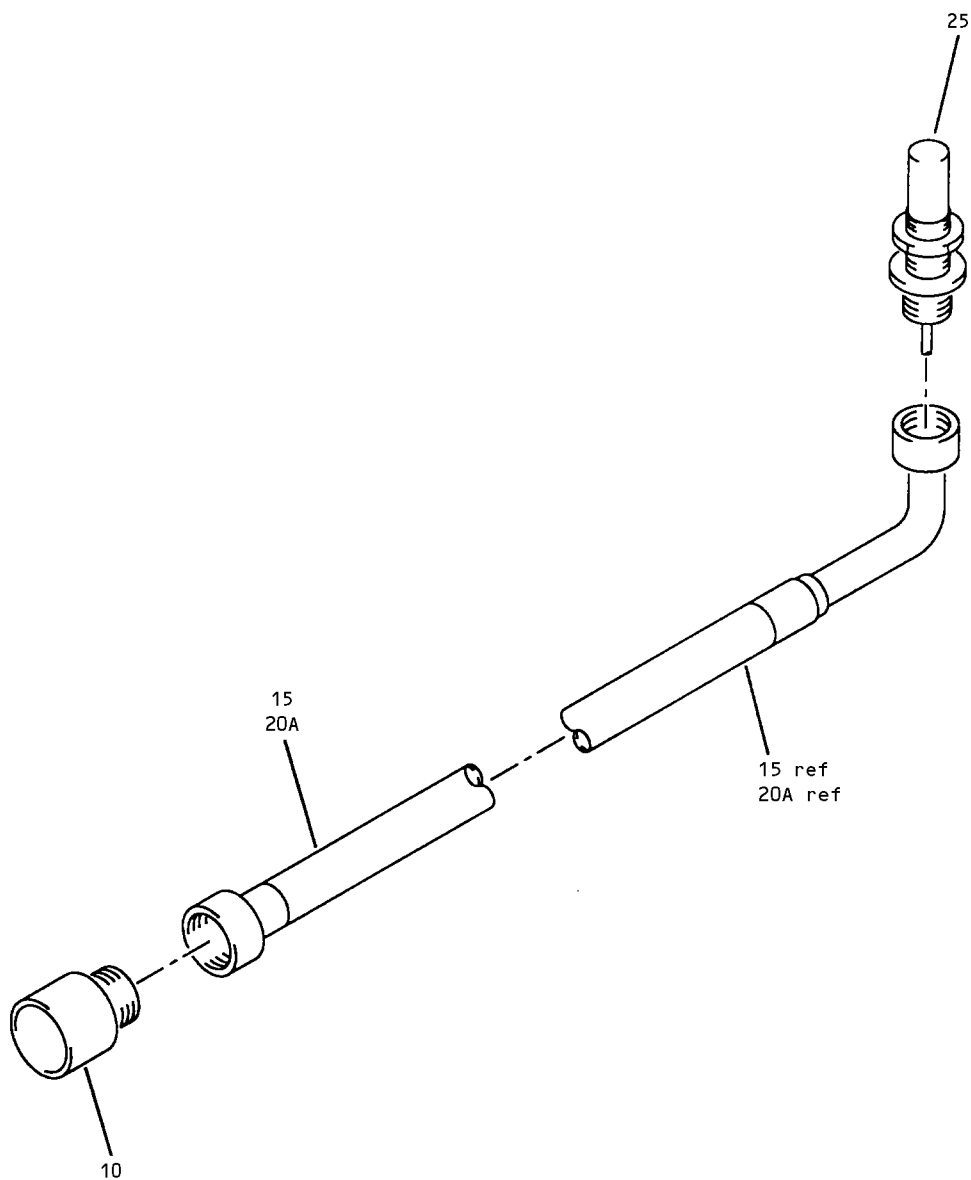
L16741

FIG. & ITEM	PART NO.	AIRLINE PART NUMBER	NOMENCLATURE 1234567	EFF CODE	QTY PER ASSY
02- -1A	287T6104-4003		HARNESS ASSY-WIRE, DRAG BRACE, SYS 1, S237	C	RF
-1B	287T6104-4007		HARNESS ASSY-WIRE, DRAG BRACE, SYS 2, S262	G	RF
-5	287T6104-4004		HARNESS ASSY-WIRE, DRAG BRACE, SYS 1, S241	D	RF
-5A	287T6104-4008		HARNESS ASSY-WIRE, DRAG BRACE, SYS 2, S263	H	RF
10	BACC63BP12B3PN		.CONNECTOR	C,D	1
-10A	BACC63BP12B3P7		.CONNECTOR	G,H	1
15	S287T001-4503		.CONDUIT ASSY	C,D	1
20	S287T001-4507		.CONDUIT ASSY	G,H	1
25	8-876-01		DELETED		
25A	8-716-01		.SENSOR- (V08748) (SPEC S283T006-28)	C,D,G ,H	1

- Item Not Illustrated

32-10-53

ILLUSTRATED PARTS LIST
01.1 Page 1029
Mar 01/03



Side Brace System 1/2 Wire Harness Assembly
Figure 3

32-10-53

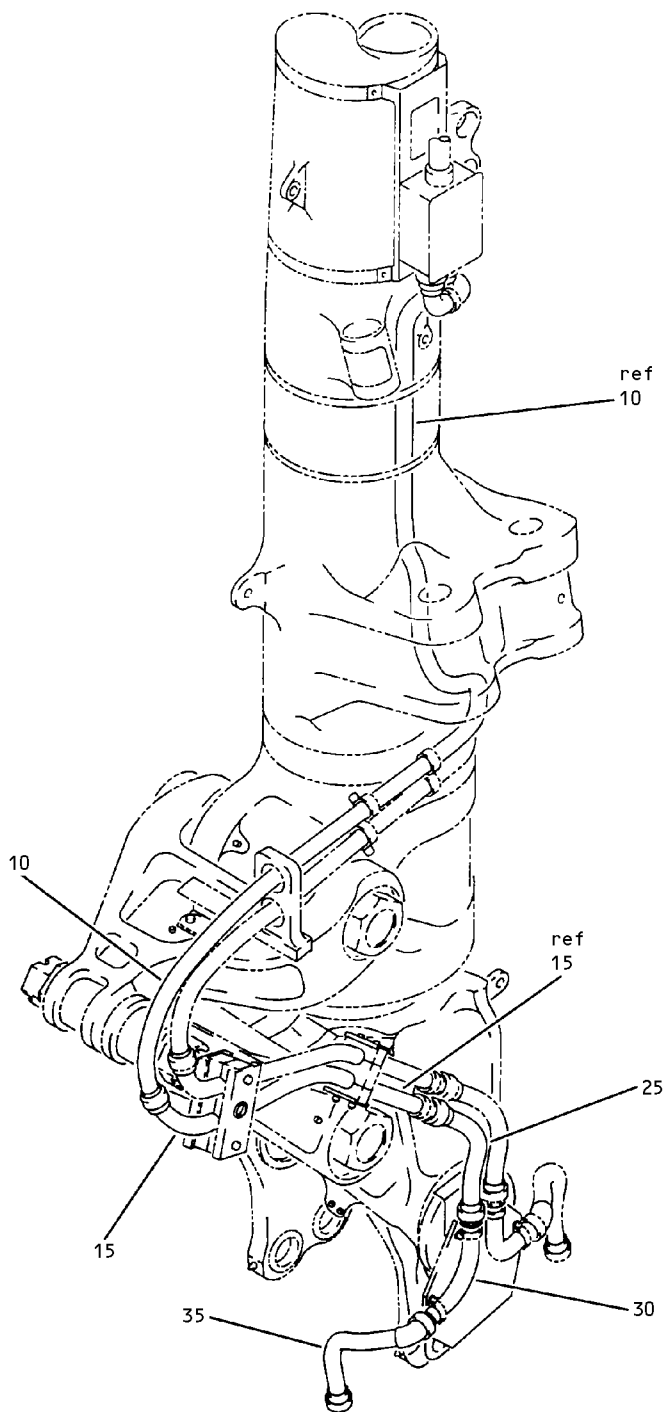
ILLUSTRATED PARTS LIST
01.1 Page 1030
Mar 01/03

L16747

FIG. & ITEM	PART NO.	AIRLINE PART NUMBER	NOMENCLATURE 1234567	EFF CODE	QTY PER ASSY
03- -1A	287T6104-4005		HARNESS ASSY-WIRE, SIDE BRACE, SYS 2, S258	E	RF
-1B	287T6104-4009		HARNESS ASSY-WIRE, SIDE BRACE, SYS 2, S258	J	RF
-5	287T6104-4006		HARNESS ASSY-WIRE, SIDE BRACE, SYS 2, S262	F	RF
-5A	287T6104-4010		HARNESS ASSY-WIRE, SIDE BRACE, SYS 2, S262	K	RF
10	BACC63BP12B3P7		.CONNECTOR	E,F	1
-10A	BACC63BP12B3PN		.CONNECTOR	J,K	1
15	S287T001-4505		.CONDUIT ASSY	E,F	1
20	S287T0001-4509		DELETED		
20A	S287T001-4509		.CONDUIT ASSY	J,K	1
25	8-716-01		.SENSOR- (V08748) (SPEC S283T006-28)	E,F,J ,K	1
-25A	8-716-01		DELETED		

- Item Not Illustrated

32-10-53



Left/Right Gear Lower Oleo To Aft/Forward Truck Wire Harness Assembly
Figure 4

32-10-53

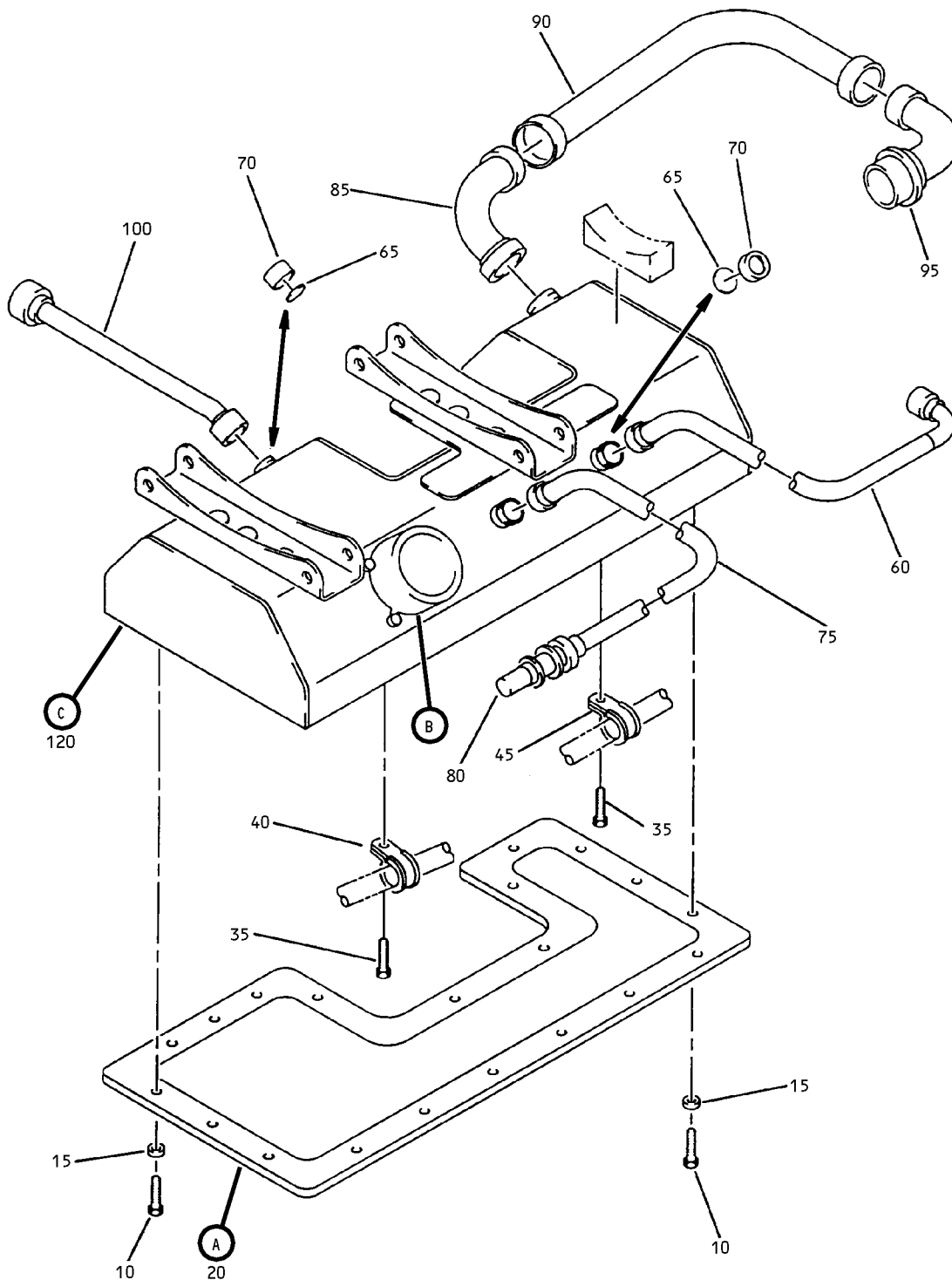
ILLUSTRATED PARTS LIST
01.1 Page 1032
Mar 01/03

FIG. & ITEM	PART NO.	AIRLINE PART NUMBER	NOMENCLATURE 1234567	EFF CODE	QTY PER ASSY
04- -1A	287T6104-4011		HARNESS ASSY-WIRE, L GR, LWR OLEO TO AFT TRUCK	L	RF
-1B	287T6104-4013		HARNESS ASSY-WIRE, L GR, LWR OLEO TO FWD TRUCK	N	RF
-5	287T6104-4012		HARNESS ASSY-WIRE, R GR, LWR OLEO TO AFT TRUCK	M	RF
-5A	287T6104-4014		HARNESS ASSY-WIRE, R GR, LWR OLEO TO FWD TRUCK	P	RF
10	254871-4511		.CONDUIT ASSY- (V05593)	L,M	1
-10A	254871-4513		.CONDUIT ASSY- (V05593)	N,P	1
15	287T6139-3		.CONDUIT ASSY-RIGID	L	1
-15A	287T6139-1		.CONDUIT ASSY-RIGID	N	1
-20	287T6139-4		.CONDUIT ASSY-RIGID	M	1
-20A	287T6139-2		.CONDUIT ASSY-RIGID	P	1
25	254871-4515		.CONDUIT ASSY- (V05593)	L,M	1
-25A	254871-4517		.CONDUIT ASSY- (V05593)	N,P	1
30	287T6139-5		.CONDUIT ASSY-RIGID	L-P	1
35	254871-4519		.CONDUIT ASSY- (V05593)	L,M	1
-35A	254871-4521		.CONDUIT ASSY- (V05593)	N,P	1
-40	287T6104-18		.FILLER	L-P	AR
-45	286T1514-OAF		.WIRE BUNDLE	L	1
-50	286T1521-OAF		.WIRE BUNDLE	M	1
-55	286T1522-OAF		.WIRE BUNDLE	N	1
-60	286T1512-OAF		.WIRE BUNDLE	P	1

- Item Not Illustrated

32-10-53

ILLUSTRATED PARTS LIST
01.1 Page 1033
Mar 01/03

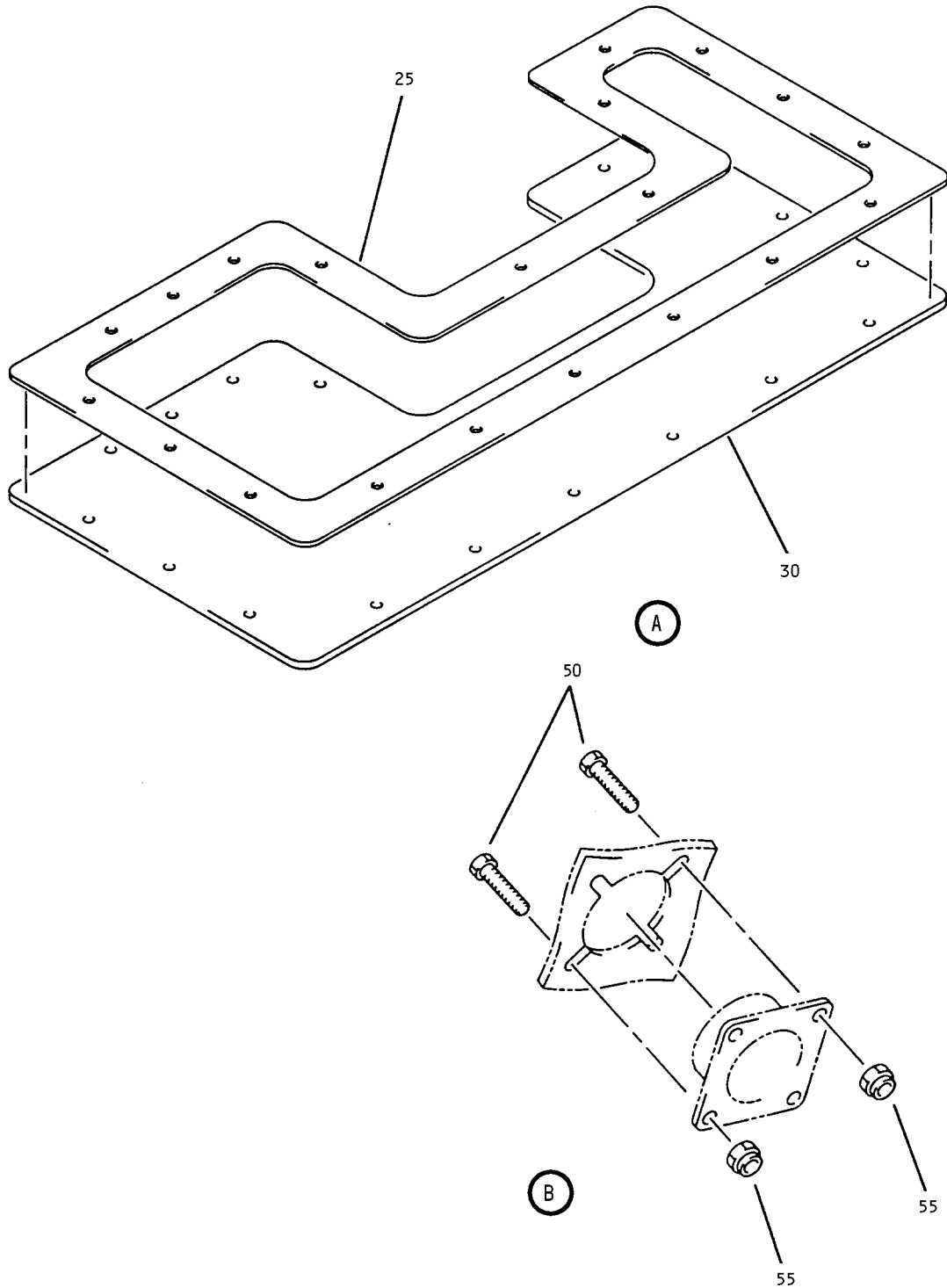


Left/Right Forward Truck, Standard/Brake Temp and No TPIS Wire Harness Assembly
 Figure 5 (Sheet 1)

32-10-53

ILLUSTRATED PARTS LIST
 01.1 Page 1034
 Mar 01/03

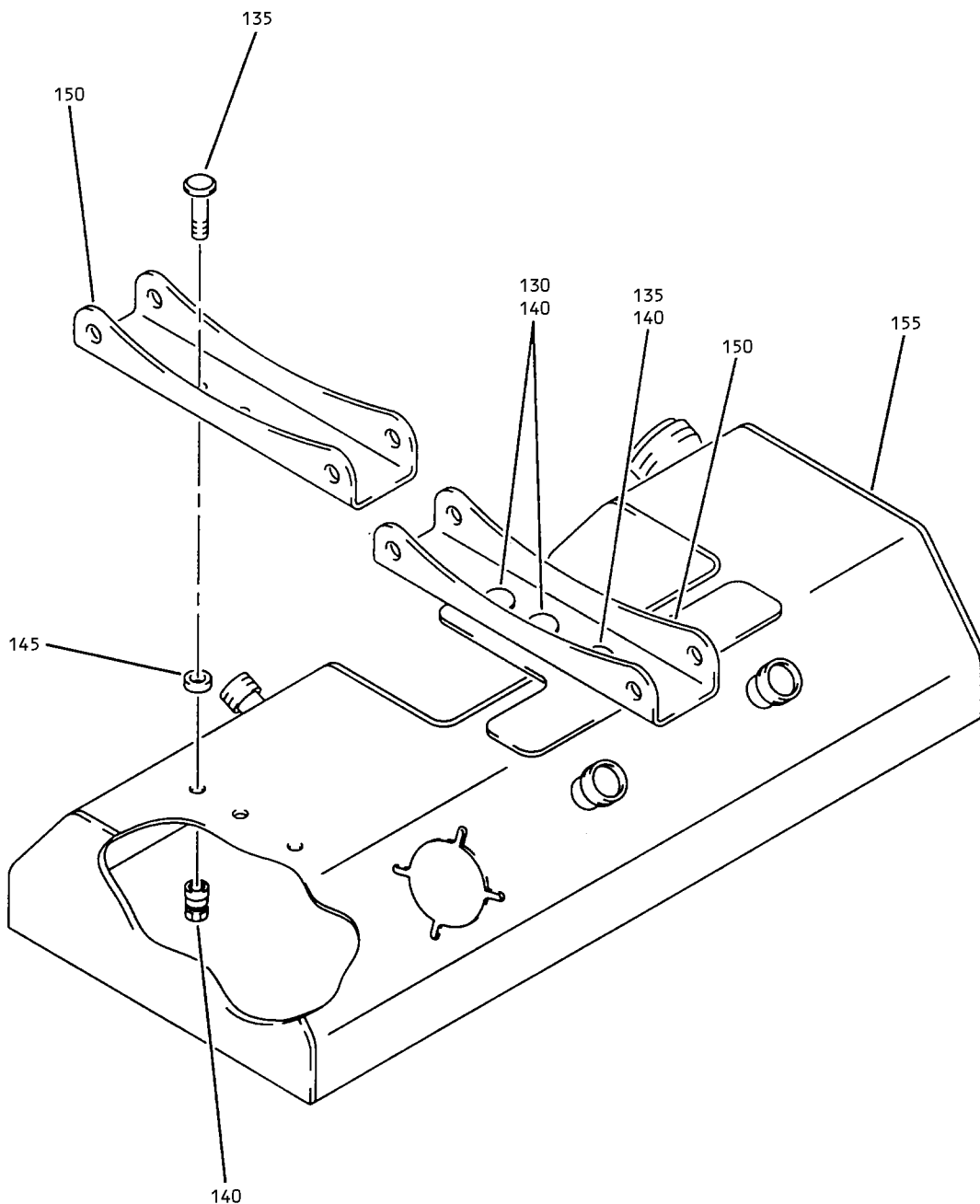
L16767



Left/Right Forward Truck, Standard/Brake Temp and No TPIS Wire Harness Assembly
Figure 5 (Sheet 2)

32-10-53

ILLUSTRATED PARTS LIST
01.1 Page 1035
Mar 01/03



(C)

Left/Right Forward Truck, Standard/Brake Temp and No TPIS Wire Harness Assembly
Figure 5 (Sheet 3)

32-10-53

ILLUSTRATED PARTS LIST
01.1 Page 1036
Mar 01/03

L16774

FIG. & ITEM	PART NO.	AIRLINE PART NUMBER	NOMENCLATURE 1234567	EFF CODE	QTY PER ASSY
05- -1A	287T6104-4015		HARNESS ASSY-WIRE, L FWD TRUCK, STD	Q	RF
-1B	287T6104-4019		HARNESS ASSY-WIRE, L FWD TRUCK, BRAKE TEMP AND NO TPIS	U	RF
-1C	287T6104-4027		HARNESS ASSY-WIRE, L FWD TRUCK, BRAKE TEMP AND NO TPIS	Z	RF
-5	287T6104-4016		HARNESS ASSY-WIRE, R FWD TRUCK, STD	R	RF
-5A	287T6104-4020		HARNESS ASSY-WIRE, R FWD TRUCK, BRAKE TEMP AND NO TPIS	V	RF
-5B	287T6104-4028		HARNESS ASSY-WIRE, R FWD TRUCK, BRAKE TEMP AND NO TPIS	AA	RF
10	NAS1802-3-8		.SCREW	Q,R,U ,V,Z, AA	20
15	NAS1149E0332R		.WASHER	Q,R,U ,V,Z, AA	20
20	287T6149-1		.COVER ASSY	Q,R,U ,V	1
-20A	287T6149-2		.COVER ASSY	Z,AA	1
25	287T6144-1		..SEAL-SILICON	Q,R,U ,V	1
-25A	287T6144-2		..SEAL-SILICON	Z,AA	1
30	287T6147-10		..PLATE	Q,R,U ,V	1
-30A	287T6147-29		..PLATE	Z,AA	1
35	BACS12GU3K8		.SCREW	Q,R,U ,V,Z, AA	2
40	JM44LC13WD6R		.CLAMP- (V22175) (SPEC BACC10GE6A) (OPT S369WHD6 (V18076)) (OPT TA12C32WD6 (V84971)) (OPT 509A6 (V83930))	Q,R,U ,V,Z, AA	1

32-10-53

FIG. & ITEM	PART NO.	AIRLINE PART NUMBER	NOMENCLATURE 1234567	EFF CODE	QTY PER ASSY
05-45	JM44LC13WD4R		.CLAMP- (V22175) (SPEC BACC10GE4A) (OPT TA12C32WD4 (V84971)) (OPT 509A4 (V83930)) (OPT S369WDH4 (V18076))	Q,R,U ,V,Z, AA	1
50	NAS1802-06-7		.SCREW	Q,R,U ,V,Z, AA	4
R 55	BRH10C06M		.NUT- (V52828) (SPEC BACN10JC06CM) (OPT T6C632JM (V11815)) (OPT 97E62 (V80539)) (OPT 109LH9075-62W (V72962)) (OPT VN303D62 (V92215)) (OPT NS202101SE62 (V80539)) (OPT H01-06BAC (V15653))	Q,R,U ,V,Z, AA	4
60	S287T001-4525		.CONDUIT ASSY	U,V	1
-60A	254871-4524		.CONDUIT ASSY- (V05593)	Z,AA	1
65	287T6111-31		.PLUG	Q,R	2
70	BACN10WW6C		.NUT	Q,R	2
75	S287T001-4531		.CONDUIT ASSY	Q,R,U ,V	1
-75A	254871-4531		.CONDUIT ASSY- (V05593)	Z,AA	1
80	8-716-01		.SENSOR- (V08748) (SPEC S283T006-28)	Q,R,U ,V,Z, AA	1
85	287T6150-1		.ELBOW ASSY	Q,R,U ,V,Z, AA	1
90	287T6139-9		.CONDUIT ASSY-RIGID	Q,R,U ,V,Z, AA	1

32-10-53

 ILLUSTRATED PARTS LIST
 01.1 Page 1038
 Mar 01/03

FIG. & ITEM	PART NO.	AIRLINE PART NUMBER	NOMENCLATURE 1234567	EFF CODE	QTY PER ASSY
05-95	287T6150-2		.ELBOW ASSY	Q,R,U ,V,Z, AA	1
100	S287T001-4523		.CONDUIT ASSY	U,V	1
-100A	254871-4523		.CONDUIT ASSY- (V05593)	Z,AA	1
-105	287T6104-42		.SLEEVE	Q,R,U ,V,Z, AA	1
-110	287T6104-43		.SLEEVE	Q,R,U ,V,Z, AA	1
-115	287T6104-44		.SLEEVE	Q,R,U ,V,Z, AA	1
120	287T6142-1		.BOX ASSY-J	Q,U	1
-120A	287T6142-7		.BOX ASSY-J	Z	1
-125	287T6142-2		.BOX ASSY-J	R,V	1
-125A	287T6142-8		.BOX ASSY-J	AA	1

32-10-53

ILLUSTRATED PARTS LIST
01.1 Page 1039
Mar 01/03

FIG. & ITEM	PART NO.	AIRLINE PART NUMBER	NOMENCLATURE 1234567	EFF CODE	QTY PER ASSY
05-130	HL1022AZ8-4		..BOLT- (VOPTK6) (SPEC BACB30NX8K4X) (OPT HL112AZ8-4 (V06725)) (OPT HL112AZ8-4 (V56878)) (OPT HL112AZ8-4 (V60516)) (OPT HL112AZ8-4 (V73197)) (OPT HL112AZ8-4 (V92215)) (OPT HL112AZ8-4 (V97928)) (OPT HL1022AZ8-4 (V06725)) (OPT HL1022AZ8-4 (V06950)) (OPT HL1022AZ8-4 (V56878)) (OPT HL1022AZ8-4 (V73197)) (OPT HL1022AZ8-4 (V97928)) (OPT HL1022AZ8-4 (V17446))	Q,R,U ,V,Z, AA	2

32-10-53

ILLUSTRATED PARTS LIST
01.1 Page 1040
Mar 01/03

 **BOEING**
COMPONENT
MAINTENANCE MANUAL

FIG. & ITEM	PART NO.	AIRLINE PART NUMBER	NOMENCLATURE 1234567	EFF CODE	QTY PER ASSY
05-135	HL1022AZ8-5		..BOLT- (VOPTK6) (SPEC BACB30NX8K5X) (OPT HL112AZ8-5 (V06725)) (OPT HL112AZ8-5 (V56878)) (OPT HL112AZ8-5 (V60516)) (OPT HL112AZ8-5 (V73197)) (OPT HL112AZ8-5 (V92215)) (OPT HL112AZ8-5 (V97928)) (OPT HL1022AZ8-5 (V06725)) (OPT HL1022AZ8-5 (V06950)) (OPT HL1022AZ8-5 (V17446)) (OPT HL1022AZ8-5 (V56878)) (OPT HL1022AZ8-5 (V73197)) (OPT HL1022AZ8-5 (V97928))	Q,R,U ,V,Z, AA	4
140	HL1087-8		..COLLAR- (V9N513) (SPEC BACC30BH8) (OPT HL1087-8 (V92215)) (OPT HL1087-8 (V73197)) (OPT HL1087-8 (V56878))	Q,R,U ,V,Z, AA	6
145	NAS1057W4A010		..SPACER	Q,R,U ,V,Z, AA	3
150	287T6147-8		..BRACKET-SPRT	Q,R,U ,V	2
-150A	287T6147-28		..BRACKET-SPRT	Z,AA	2
155	287T6148-1		..WELDMENT ASSY	Q,U	1
-155A	287T6148-7		..WELDMENT ASSY	Z	1
-160	287T6148-2		..WELDMENT ASSY	R,V	1

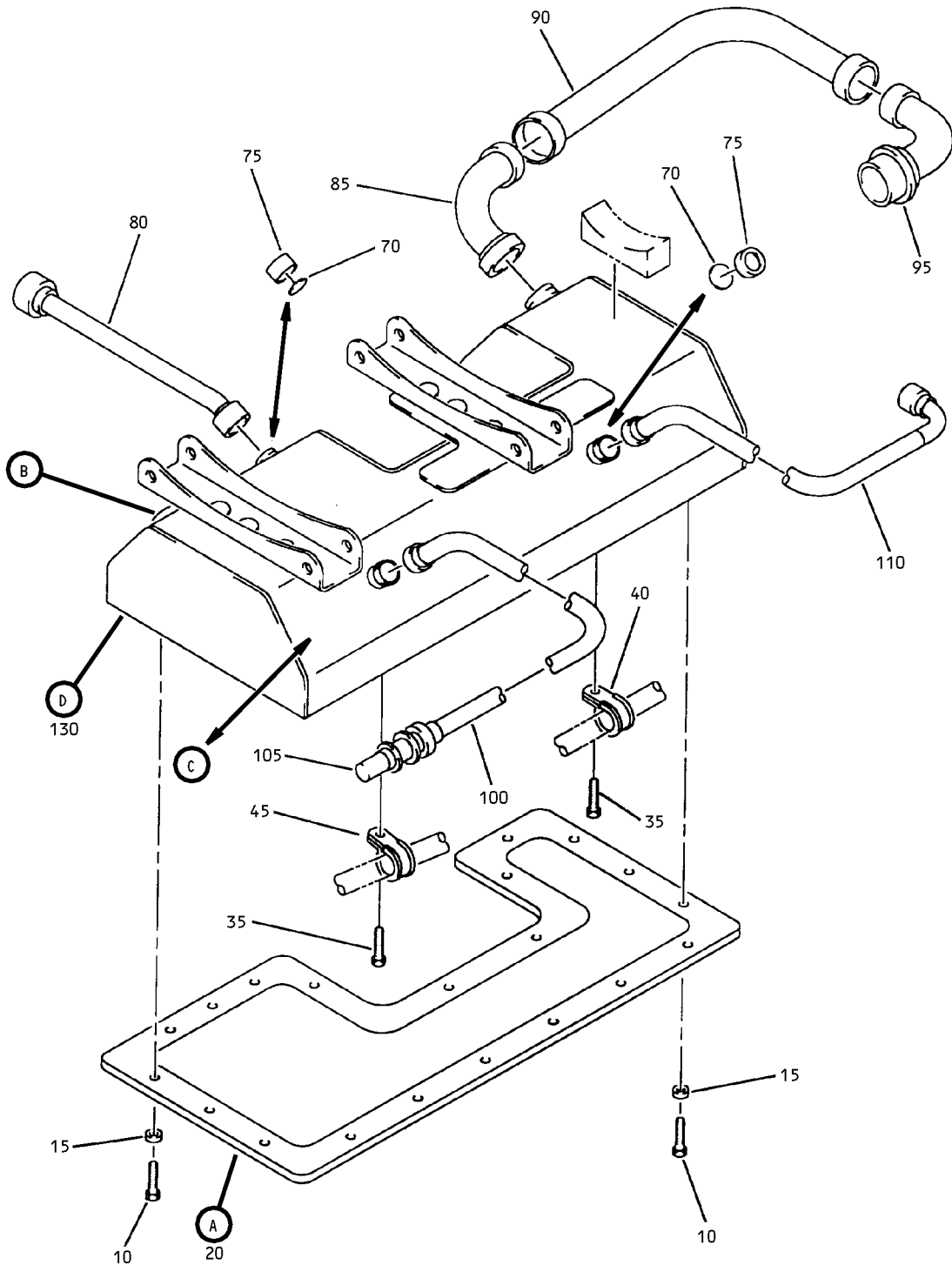
32-10-53

FIG. & ITEM	PART NO.	AIRLINE PART NUMBER	NOMENCLATURE	EFF CODE	QTY PER ASSY
			1234567		
05-					
-160A	287T6148-8		.WELDMENT ASSY	AA	1
-165	286T0676-OAF		.WIRE BUNDLE	Q	1
-170	286T0686-OAF		.WIRE BUNDLE	R	1
-175	286T0676-OAG		.WIRE BUNDLE	U,Z	1
-180	286T0686-OAG		.WIRE BUNDLE	V,AA	1

- Item Not Illustrated

32-10-53

ILLUSTRATED PARTS LIST
 01.1 Page 1042
 Mar 01/03

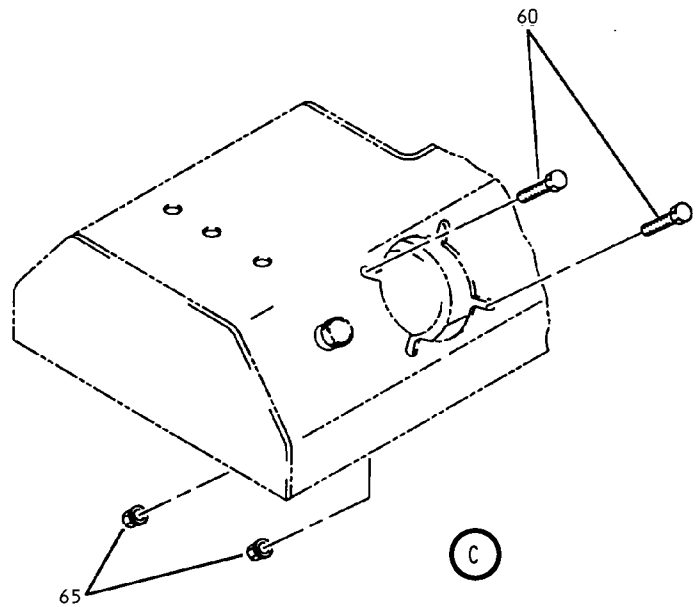
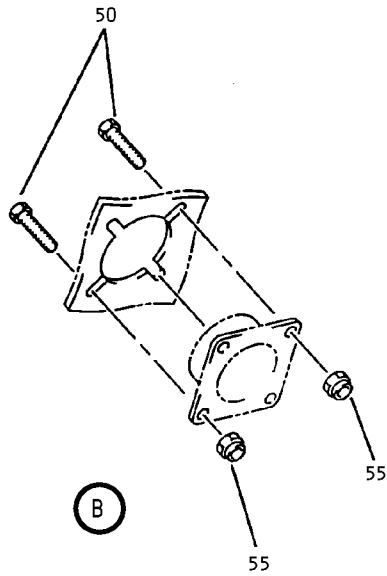
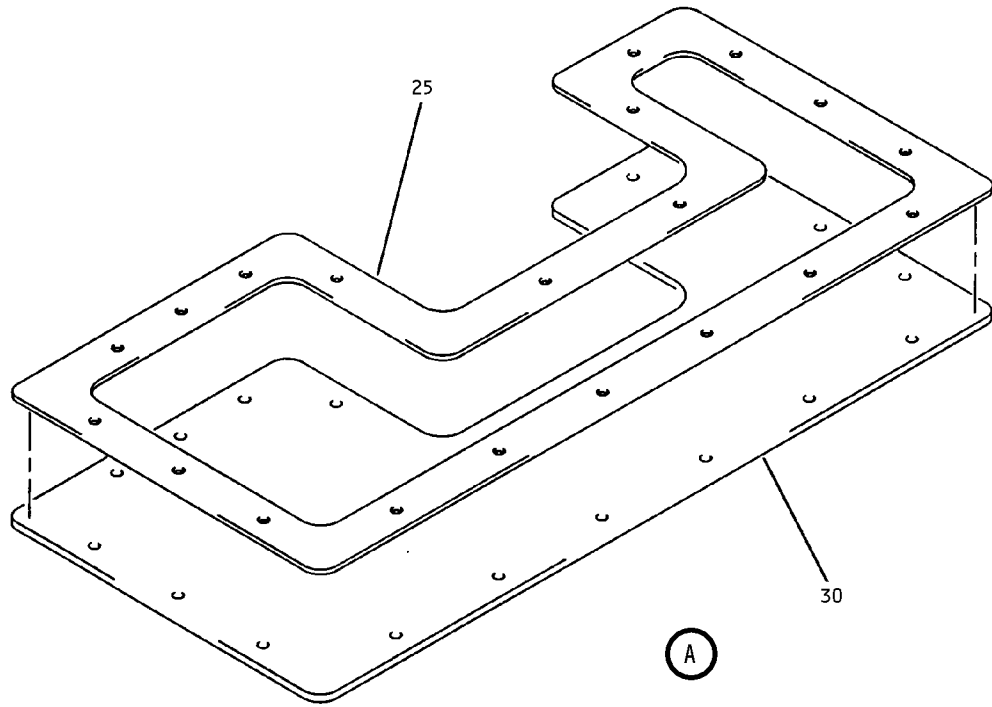


Left/Right Aft Truck, Standard/Brake Temp and No TPIS Wire Harness Assembly
 Figure 6 (Sheet 1)

32-10-53

ILLUSTRATED PARTS LIST
 01.1 Page 1044
 Mar 01/03

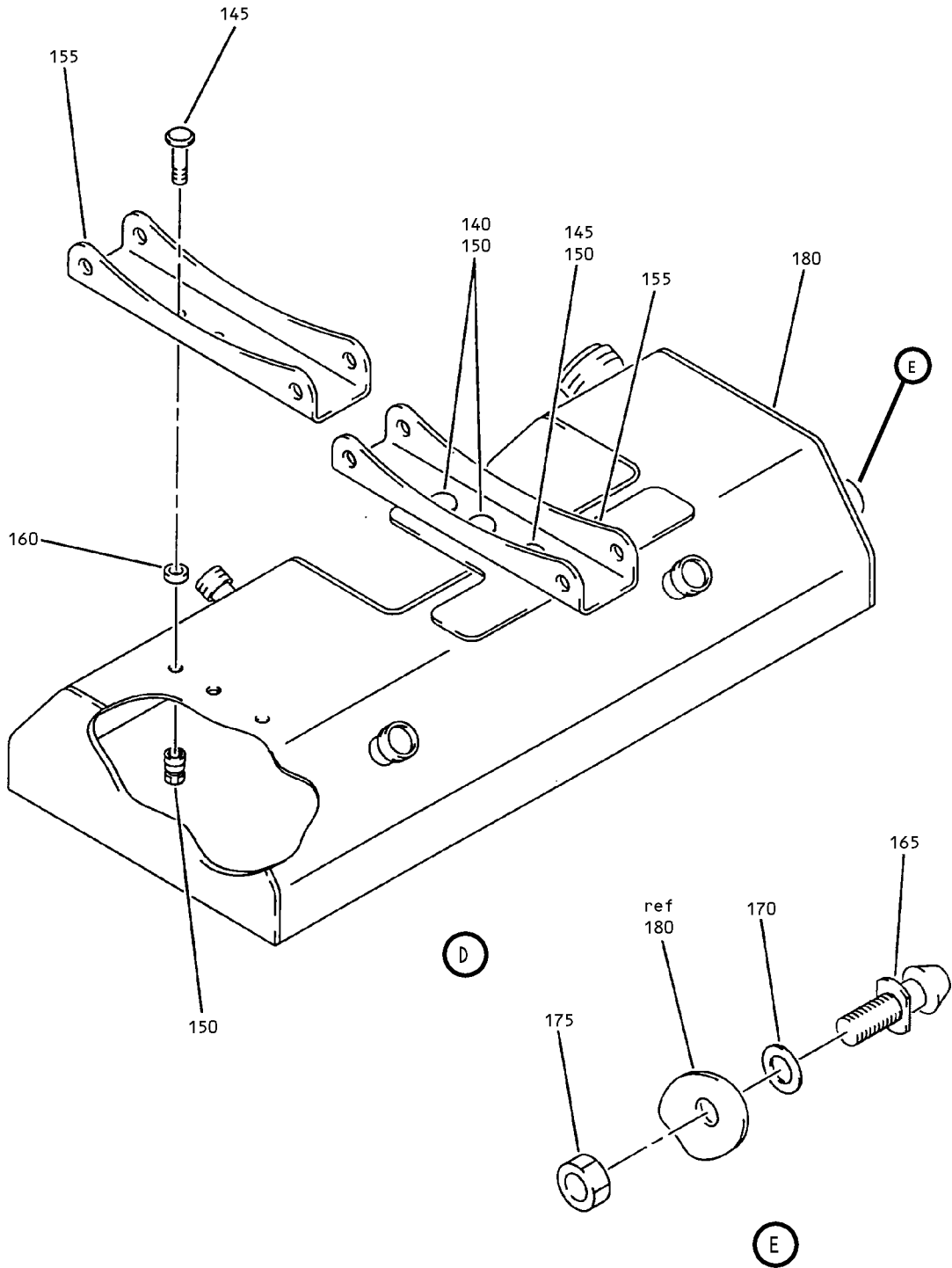
L16777



Left/Right Aft Truck, Standard/Brake Temp and No TPIS Wire Harness Assembly
Figure 6 (Sheet 2)

32-10-53

ILLUSTRATED PARTS LIST
01.1 Page 1045
Mar 01/03



Left/Right Aft Truck, Standard/Brake Temp and No TPIS Wire Harness Assembly
 Figure 6 (Sheet 3)

32-10-53

ILLUSTRATED PARTS LIST
 01.1 Page 1046
 Mar 01/03

FIG. & ITEM	PART NO.	AIRLINE PART NUMBER	NOMENCLATURE 1234567	EFF CODE	QTY PER ASSY
06- -1A	287T6104-4017		HARNESS ASSY-WIRE, L AFT TRUCK, STD	S	RF
-1B	287T6104-4021		HARNESS ASSY-WIRE, L AFT TRUCK, BRAKE TEMP AND NO TPIS	W	RF
-1C	287T6104-4029		HARNESS ASSY-WIRE, L AFT TRUCK, BRAKE TEMP AND NO TPIS	AB	RF
-5	287T6104-4018		HARNESS ASSY-WIRE, R AFT TRUCK, STD	T	RF
-5A	287T6104-4022		HARNESS ASSY-WIRE, R AFT TRUCK, BRAKE TEMP AND NO TPIS	X	RF
-5B	287T6104-4024		DELETED		
-5C	287T6104-4030		HARNESS ASSY-WIRE, R AFT TRUCK, BRAKE TEMP AND NO TPIS	AC	RF
10	NAS1802-3-8		.SCREW	S,T,W ,X,AB ,AC	20
15	NAS1149E0332R		.WASHER	S,T,W ,X,AB ,AC	20
20	287T6149-1		.COVER ASSY	S,T,W ,X	1
-20A	287T6149-2		.COVER ASSY	AB,AC	1
25	287T6144-1		..SEAL-SILICON	S,T,W ,X	1
-25A	287T6144-2		..SEAL-SILICON	AB,AC	1
30	287T6147-10		..PLATE	S,T,W ,X	1
-30A	287T6147-29		..PLATE	AB,AC	1
35	BACS12GU3K8		.SCREW	S,T,W ,X,AB ,AC	2
40	JM44LC13WD4R		.CLAMP- (V22175) (SPEC BACC10GE4A) (OPT TA12C32WD4 (V84971)) (OPT 509A4 (V83930)) (OPT S369WDH4 (V18076))	S,T,W ,X,AB ,AC	1

32-10-53

ILLUSTRATED PARTS LIST
01.1 Page 1047
Mar 01/03

FIG. & ITEM	PART NO.	AIRLINE PART NUMBER	NOMENCLATURE 1234567	EFF CODE	QTY PER ASSY
06-45	JM44LC13WD5A		.CLAMP- (V22175) (SPEC BACC10GE5A) (OPT S369WHD5 (V18076)) (OPT TA12C32WD5 (V84971)) (OPT 509A5 (V83930))	W	1
R 50	NAS1802-06-7		.SCREW	S,W,A B	4
R 55	BRH10C06M		.NUT- (V52828) (SPEC BACN10JC06CM) (OPT T6C632JM (V11815)) (OPT 97E62 (V80539)) (OPT 109LH9075-62W (V72962)) (OPT VN303D62 (V92215)) (OPT NS202101SE62 (V80539)) (OPT H01-06BAC (V15653))	S,W,A B	4
R 60	NAS1802-06-7		.SCREW	T,X,A C	4
R 65	BRH10C06M		.NUT- (V52828) (SPEC BACN10JC06CM) (OPT T6C632JM (V11815)) (OPT 97E62 (V80539)) (OPT 109LH9075-62W (V72962)) (OPT VN303D62 (V92215)) (OPT NS202101SE62 (V80539)) (OPT H01-06BAC (V15653))	T,X,A C	4
70	287T6111-31		.PLUG	S,T	2
75	BACN10WW6C		.NUT	S,T	2

32-10-53

 ILLUSTRATED PARTS LIST
 01.1 Page 1048
 Mar 01/03

FIG. & ITEM	PART NO.	AIRLINE PART NUMBER	NOMENCLATURE 1234567	EFF CODE	QTY PER ASSY
06-80	S287T001-4523		. CONDUIT ASSY	W,X	1
-80A	254871-4523		. CONDUIT ASSY- (V05593)	AB,AC	1
85	287T6150-1		. ELBOW ASSY-RIGID	S,T,W ,X,AB ,AC	1
90	287T6139-9		. CONDUIT ASSY-RIGID	S,T,W ,X,AB ,AC	1
95	287T6150-2		. ELBOW ASSY	S,T,W ,X,AB ,AC	1
100	S287T001-4533		. CONDUIT ASSY	S,T,W ,X	1
-100A	254871-4533		. CONDUIT ASSY- (V05593)	AB,AC	1
105	8-716-01		. SENSOR- (V08748)	S,T,W ,X,AB ,AC	1
110	S287T001-4525		(SPEC S287T006-28) . CONDUIT ASSY	S,T,W ,X	1
-110A	254871-4525		. CONDUIT ASSY- (V05593)	AB,AC	1
-115	287T6104-42		. SLEEVE	S,T,W ,X,AB ,AC	1
-120	287T6104-43		. SLEEVE	S,T,W ,X,AB ,AC	1
-125	287T6104-44		. SLEEVE	S,T,W ,X,AB ,AC	1

32-10-53

ILLUSTRATED PARTS LIST
01.1 Page 1049
Mar 01/03

FIG. & ITEM	PART NO.	AIRLINE PART NUMBER	NOMENCLATURE 1234567	EFF CODE	QTY PER ASSY
06-					
130	287T6142-3		.BOX ASSY-J	S,W	1
-130A	287T6142-9		.BOX ASSY-J	AB	1
-135	287T6142-4		.BOX ASSY-J	T,X	1
-135A	287T6142-10		.BOX ASSY-J	AC	1
-135B	287T6142-5		DELETED		
140	HL1022AZ8-4		..BOLT- (VOPTK6) (SPEC BACB30NX8K4X) (OPT HL112AZ8-4 (V06725)) (OPT HL112AZ8-4 (V56878)) (OPT HL112AZ8-4 (V60516)) (OPT HL112AZ8-4 (V73197)) (OPT HL112AZ8-4 (V92215)) (OPT HL112AZ8-4 (V97928)) (OPT HL1022AZ8-4 (V06725)) (OPT HL1022AZ8-4 (V06950)) (OPT HL1022AZ8-4 (V56878)) (OPT HL1022AZ8-4 (V73197)) (OPT HL1022AZ8-4 (V97928)) (OPT HL1022AZ8-4 (V17446))	S,T,W ,X,AB ,AC	2

32-10-53

 ILLUSTRATED PARTS LIST
 01.1 Page 1050
 Mar 01/03

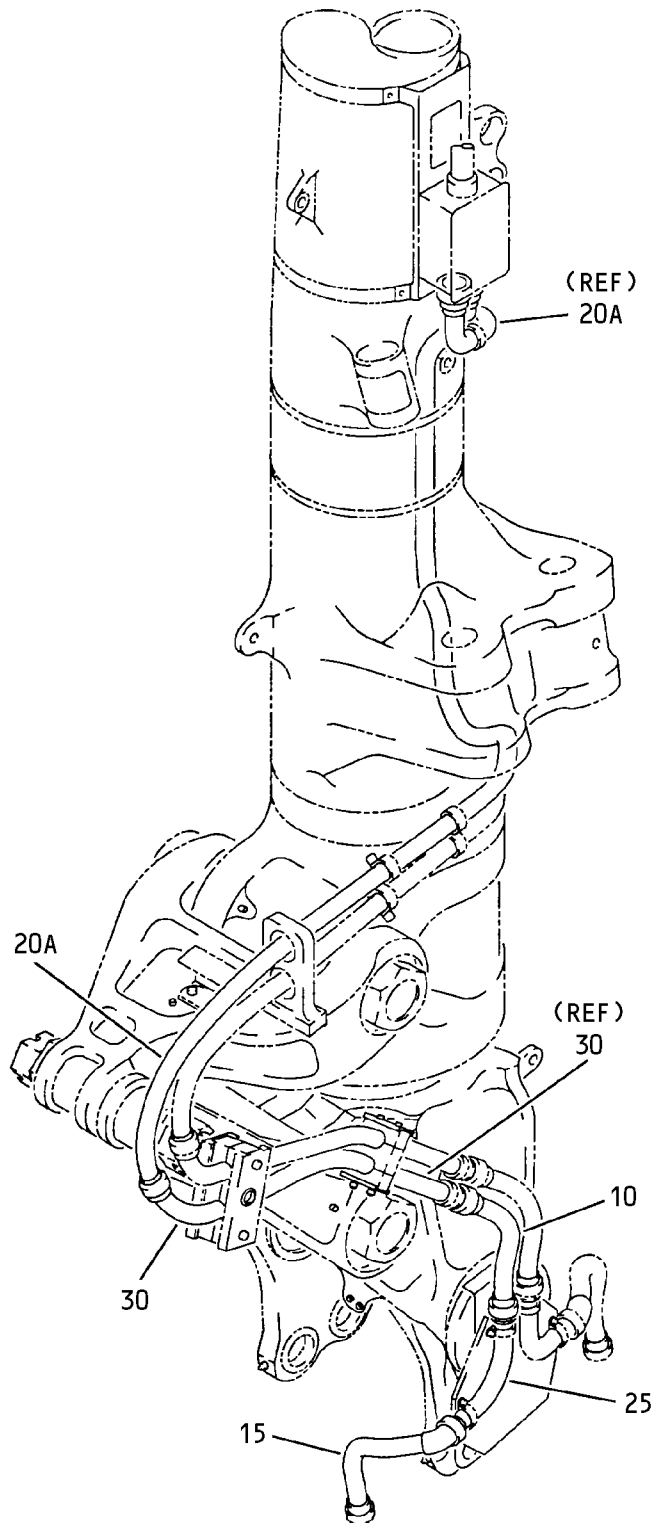
FIG. & ITEM	PART NO.	AIRLINE PART NUMBER	NOMENCLATURE 1234567	EFF CODE	QTY PER ASSY
06-145	BACBNX8K5X		..BOLT	S,T,W X,AB AC	4
150	HL1087-8		..COLLAR- (V9N513) (SPEC BACC30BH8) (OPT HL1087-8 (V92215)) (OPT HL1087-8 (V73197)) (OPT HL1087-8 (V56878))	S,T,W X,AB AC	6
155	287T6147-8		..BRACKET-SPRT	S,T,W	2
-155A	287T6147-28		..BRACKET-SPRT	AB,AC	2
-155B	287T6147-18		DELETED		
160	NAS1057W4A010		..SPACER	S,T,W X,AB AC	3
165	66-18544-1		..STUD-GND	S,T,W X,AB AC	1
170	MS35333-76		..WASHER	S,T,W X,AB AC	1
175	52NE066		..NUT- (V72962)	S,T,W X,AB AC	1
180	287T6148-3		..WELDMENT ASSY	S,W	1
-180A	287T6148-9		..WELDMENT ASSY	AB	1

32-10-53

FIG. & ITEM	PART NO.	AIRLINE PART NUMBER	NOMENCLATURE 1234567	EFF CODE	QTY PER ASSY
06-					
-185	287T6148-4		..WELDMENT ASSY	T,X	1
-185A	287T6148-10		..WELDMENT ASSY	AC	1
-190	286T0668-OAG		.WIRE BUNDLE	S,AB	1
-195	286T0688-OAG		.WIRE BUNDLE	T,Y	1
-200	286T0668-OAF		.WIRE BUNDLE	W	1
-205	286T0688-OAF		.WIRE BUNDLE	X	1

- Item Not Illustrated

32-10-53



Left/Right Gear Oleo to AFT Truck Wire Harness Assembly
Figure 7

32-10-53

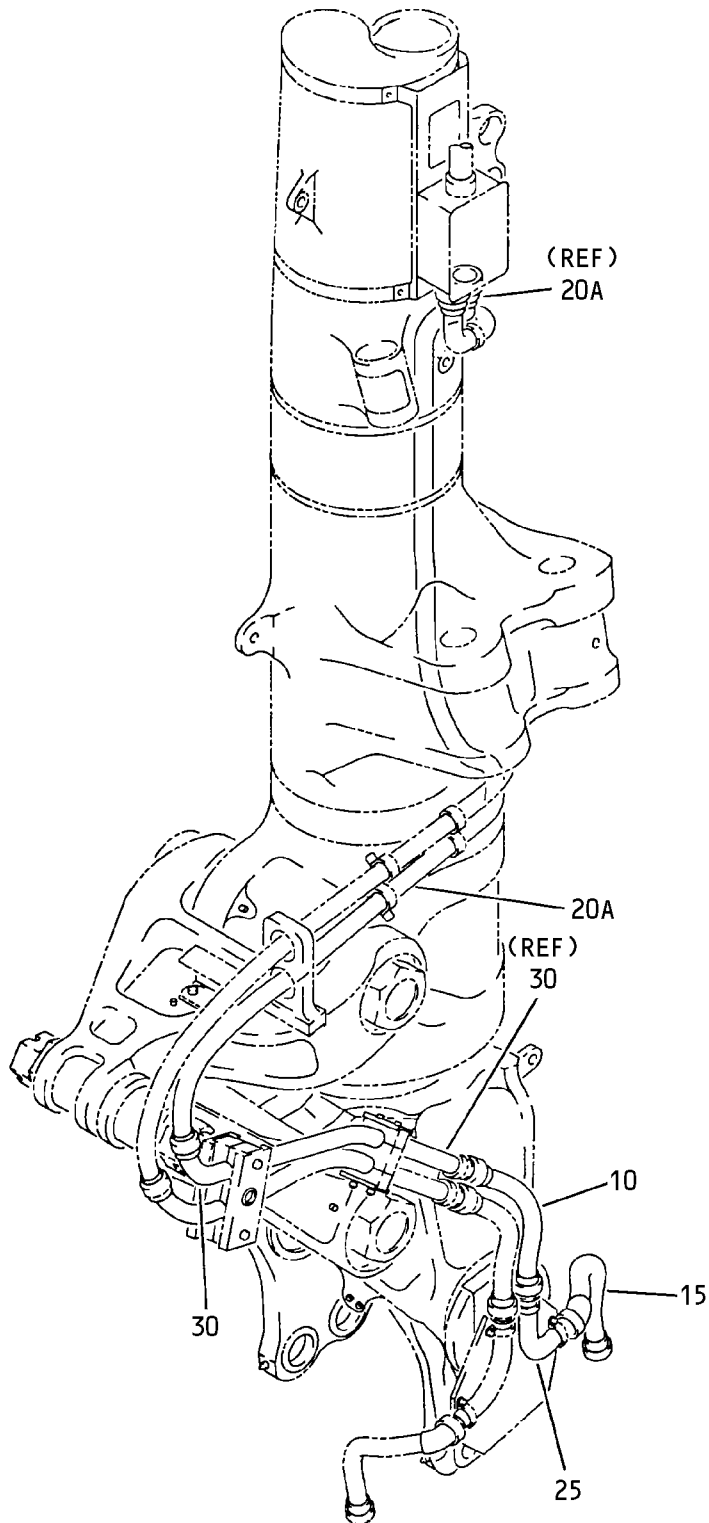
ILLUSTRATED PARTS LIST
01.1 Page 1054
Mar 01/03

FIG. & ITEM	PART NO.	AIRLINE PART NUMBER	NOMENCLATURE 1234567	EFF CODE	QTY PER ASSY
07- -1A	287T6104-4031		HARNESS ASSY-WIRE, LWR OLEO TO AFT TRUCK, L MLG	AF	RF
-5	287T6104-4032		HARNESS ASSY-WIRE, LWR OLEO TO AFT TRUCK, R MLG,	AG	RF
10	S287T001-4515		.CONDUIT ASSY	AF,AG	1
15	S287T001-4519		.CONDUIT ASSY	AF,AG	1
20	S287T001-4535		DELETED		
R 20A	254871-4535		.CONDUIT ASSY- (V05593) (SPEC S287T001-4535)	AF,AG	1
25	287T6139-5		.CONDUIT ASSY-RIGID	AF,AG	1
30	287T6139-3		.CONDUIT ASSY-RIGID	AF	1
-35	287T6139-4		.CONDUIT ASSY-RIGID	AG	1
-40	287T6104-18		.FILLER	AF,AG	1
-45	286T1514-OAF		.WIRE BUNDLE	AF	1
-50	286T1524-OAF		.WIRE BUNDLE	AG	1

- Item Not Illustrated

32-10-53

ILLUSTRATED PARTS LIST
01.1 Page 1055
Mar 01/03



Left/Right Gear Oleo to FWD Truck Wire Harness Assembly
Figure 8

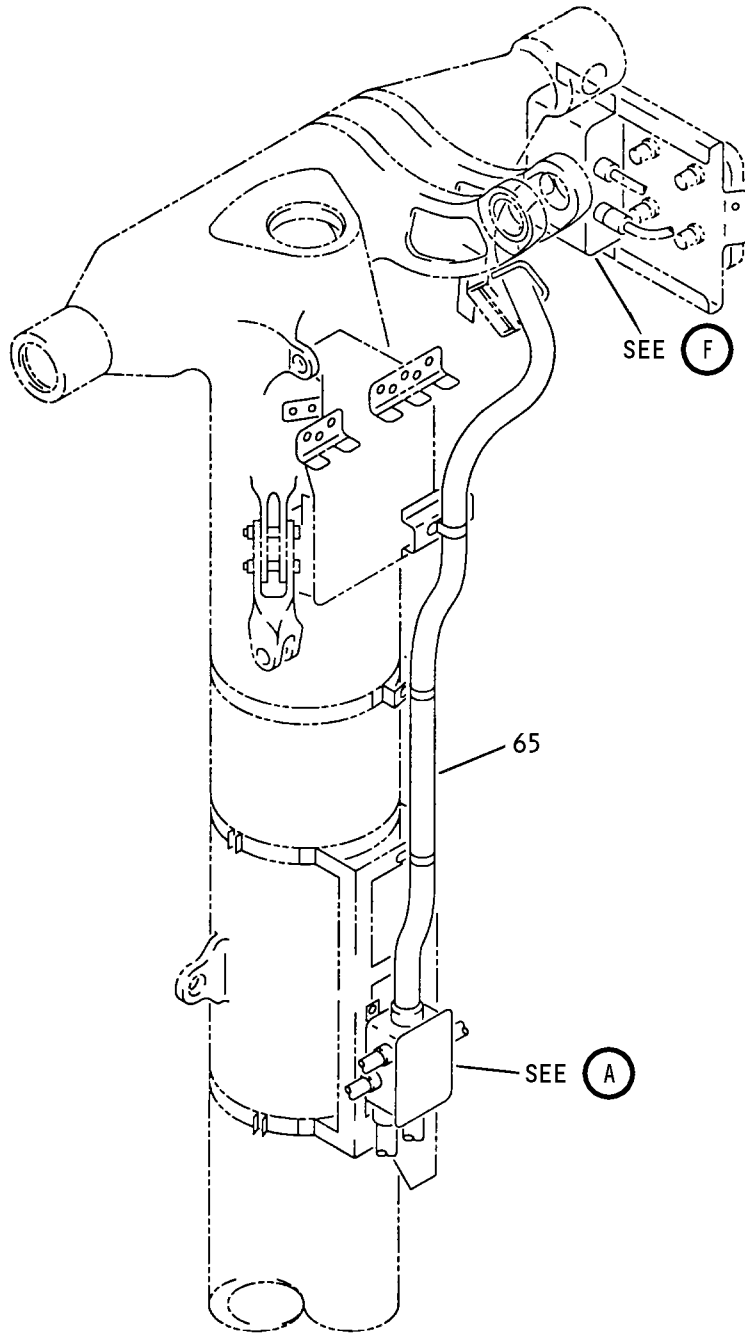
32-10-53

ILLUSTRATED PARTS LIST
01.1 Page 1056
Mar 01/03

L77473

FIG. & ITEM	PART NO.	AIRLINE PART NUMBER	NOMENCLATURE 1234567	EFF CODE	QTY PER ASSY
08- -1A	287T6104-4033		HARNESS ASSY-WIRE, LWR OLEO TO FWD TRUCK, L MLG	AH	RF
-5	287T6104-4034		HARNESS ASSY-WIRE, LWR OLEO TO FWD TRUCK, R MLG	AJ	RF
10	S287T001-4517		.CONDUIT ASSY	AH,AJ	1
15	S287T001-4521		.CONDUIT ASSY	AH,AJ	1
20	S287T001-4534		DELETED		
R 20A	254871-4534		.CONDUIT ASSY- (V05593) (SPEC S287T001-4534)	AH,AJ	1
25	287T6139-5		.CONDUIT ASSY-RIGID	AH,AJ	1
30	287T6139-1		.CONDUIT ASSY-RIGID	AH	1
-35	287T6139-2		.CONDUIT ASSY-RIGID	AJ	1
-40	287T6104-18		.FILLER	AH,AJ	1
-45	286T1512-OAF		.WIRE BUNDLE	AH	1
-50	286T1522-OAF		.WIRE BUNDLE	AJ	1

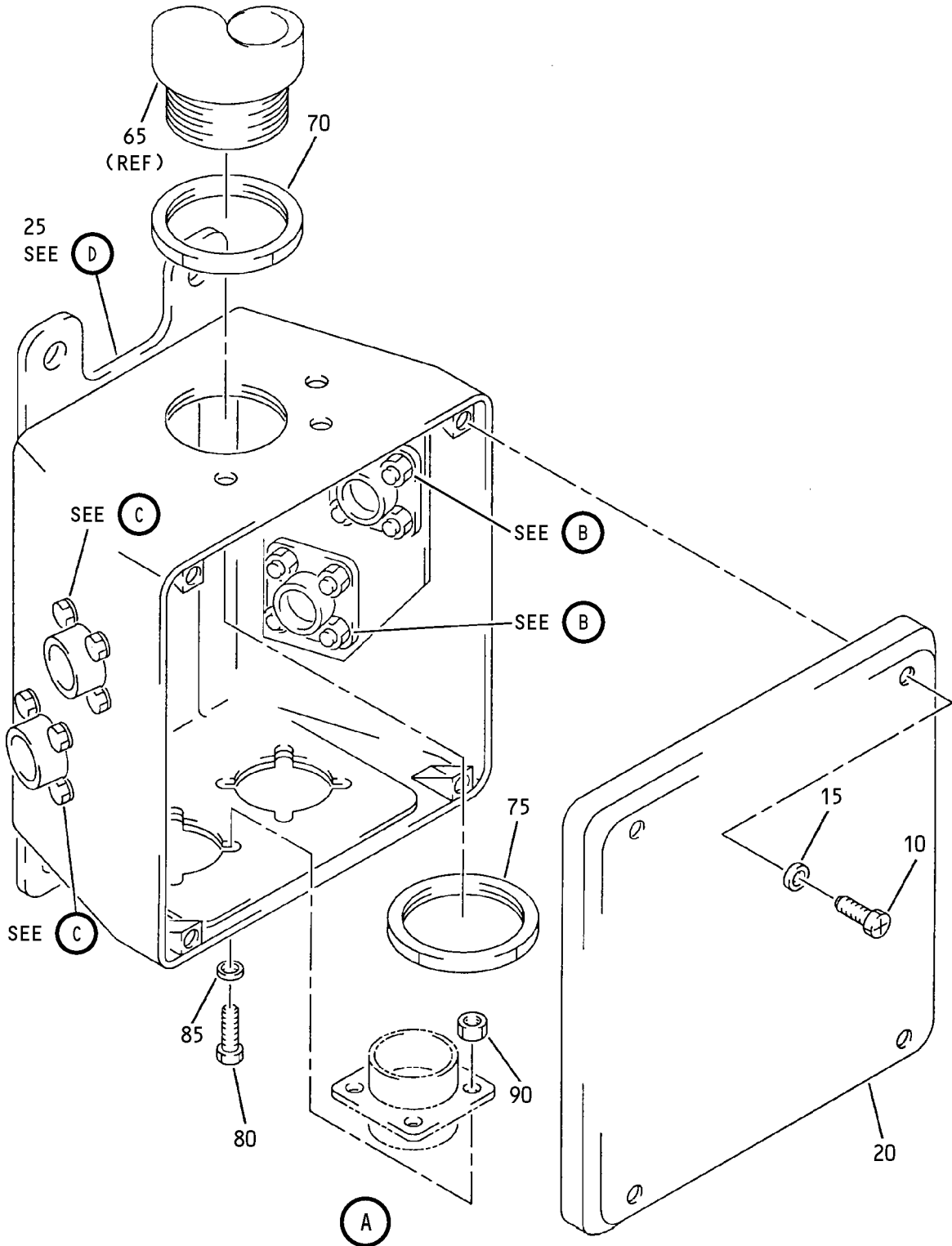
- Item Not Illustrated



Left/Right Gear Upper Oleo Wire Harness Assembly
Figure 9 (Sheet 1)

32-10-53

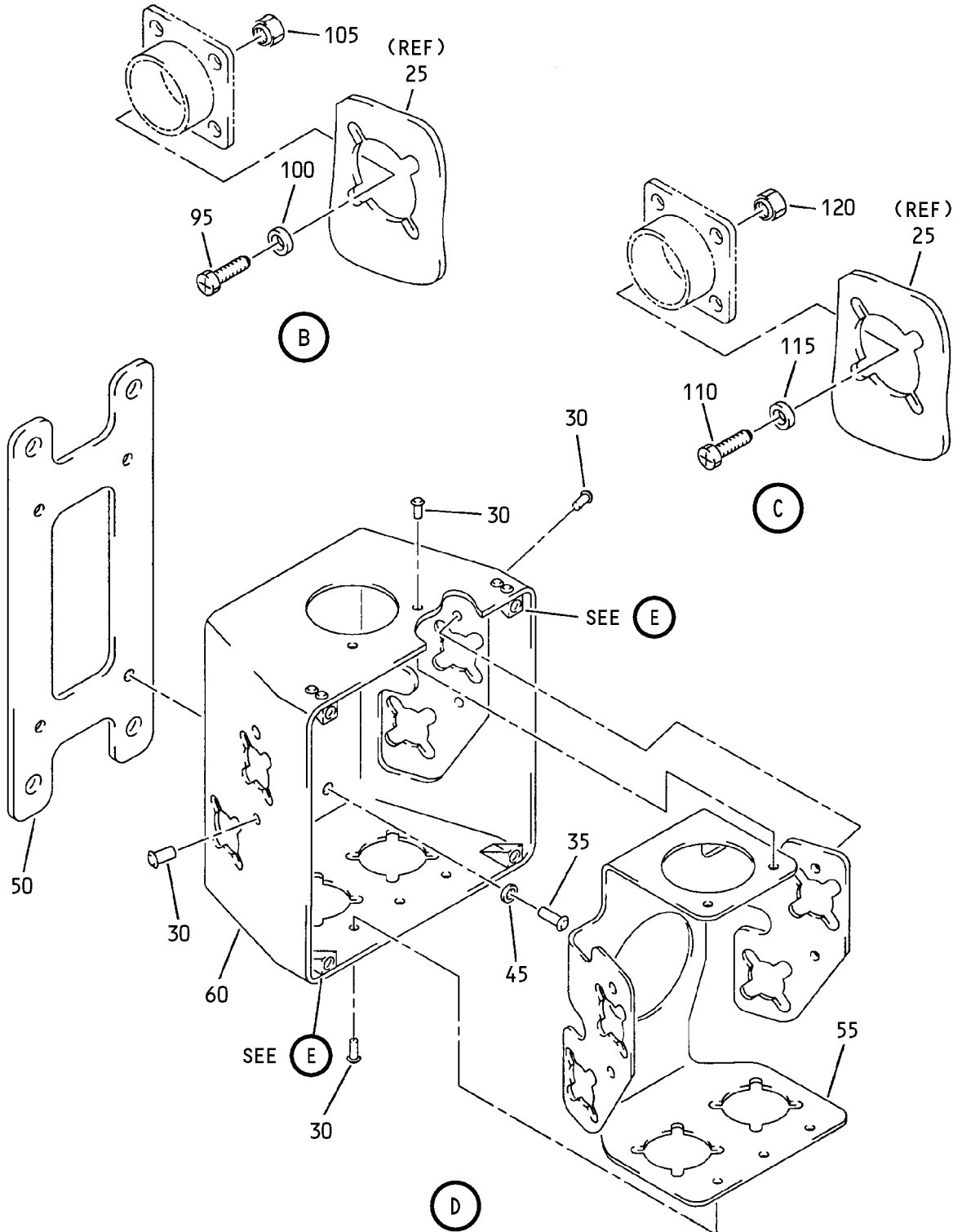
ILLUSTRATED PARTS LIST
01.1 Page 1059
Mar 01/03



Left/Right Gear Upper Oleo Wire Harness Assembly
 Figure 9 (Sheet 2)

32-10-53

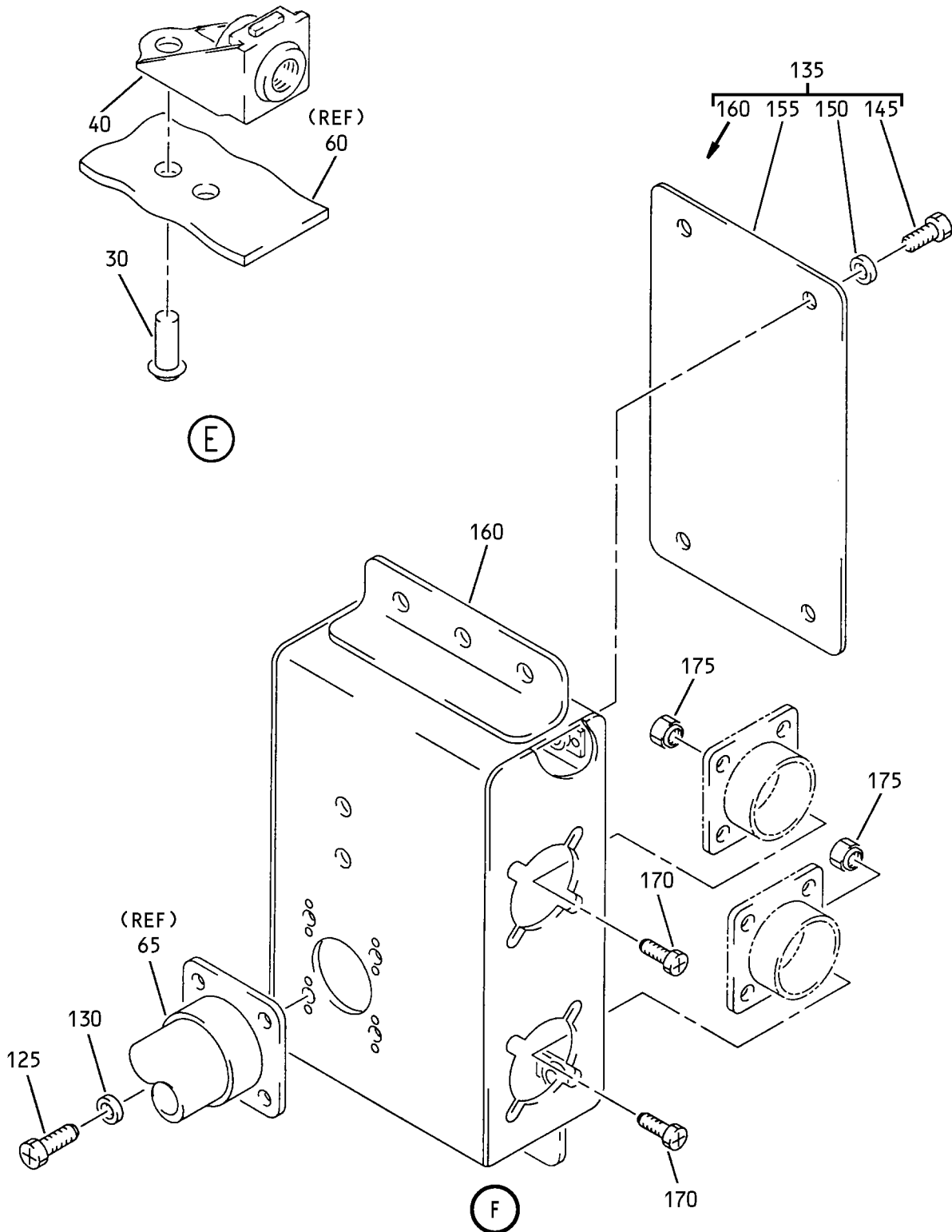
ILLUSTRATED PARTS LIST
 01.1 Page 1060
 Mar 01/03



Left/Right Gear Upper Oleo Wire Harness Assembly
Figure 9 (Sheet 3)

32-10-53

ILLUSTRATED PARTS LIST
01.1 Page 1061
Mar 01/03



Left/Right Gear Upper Oleo Wire Harness Assembly
 Figure 9 (Sheet 4)

32-10-53

ILLUSTRATED PARTS LIST
 01.1 Page 1062
 Mar 01/03

 **BOEING**
COMPONENT
MAINTENANCE MANUAL

FIG. & ITEM	PART NO.	AIRLINE PART NUMBER	NOMENCLATURE 1234567	EFF CODE	QTY PER ASSY
09- -1A	287T6104-4035		HARNESS ASSY-WIRE, UPR OLEO L MLG	AK	RF
-5	287T6104-4036		HARNESS ASSY-WIRE, UPR OLEO R MLG	AL	RF
10	NAS1801-3-6		.SCREW	AK,AL	4
15	NAS1149D0363J		.WASHER	AK,AL	4
20	287T6105-4		.COVER	AK,AL	1
25	287T6105-4002		.BOX ASSY-J	AK,AL	1
30	BACR15BB3A		..RIVET- (SIZE DETERMINE ON INST) (NHA 287T6105)	AK,AL	17
35	BACR15BB6A		..RIVET- (SIZE DETRMINE ON INST) (NHA 287T6105)	AK,AL	4
40	MF6000-3		..NUTPLATE- (V15653) (SPEC BACN10KJ3)	AK,AL	4
45	NAS1149E0316P		..WASHER	AK,AL	4
50	287T6111-4005		..BRACKET	AK,AL	1
55	287T6119-2		..LINER	AK,AL	1
60	287T6105-8		..BOX	AK,AL	1
65	254871-4501		.CONDUIT ASSY- (V05593)	AK,AL	1
70	6-2S20KC		.NUT- (V30463)	AK,AL	1
75	28-12S20KC		.FITTING-BOX (V30463)	AK,AL	1
80	NAS1802-06-6		.SCREW	AK,AL	8
85	NAS1149CN616R		.WASHER	AK,AL	8
R 90	BRH10C06M		.NUT- (V52828) (SPEC BACN10JC06CM) (OPT T6C632JM (V11815)) (OPT 97E62 (V80539)) (OPT 109LH9075-62W (V72962)) (OPT VN303D62 (V92215)) (OPT NS202101SE62 (V80539)) (OPT H01-06BAC (V15653))	AK,AL	8

32-10-53

ILLUSTRATED PARTS LIST
01.1 Page 1063
Mar 01/03

FIG. & ITEM	PART NO.	AIRLINE PART NUMBER	NOMENCLATURE 1234567	EFF CODE	QTY PER ASSY
09- 95 100 105	NAS1802-04-6 NAS1149CN416CR BRH1110C04M		.SCREW .WASHER .NUT- (V52828) (SPEC BACN10JC04CM) (OPT H01-04BAC (V15653)) (OPT NS202101SE40 (V80539)) (OPT VN303D40 (V92215)) (OPT 109LH9075-40W (V72962)) (OPT 97E40 (V80539)) (OPT T6C440JM (V11815))	AK,AL AK,AL AK,AL	8 8 8
110 115 120	NAS1802-04-6 NAS1149CN416R BRH1110C04M		.SCREW .WASHER .NUT- (V52828) (SPEC BACN10JC04CM) (OPT H01-04BAC (V15653)) (OPT NS202101SE40 (V80539)) (OPT VN303D40 (V92215)) (OPT 109LH9075-40W (V72962)) (OPT 97E40 (V80539)) (OPT T6C440JM (V11815))	AK,AL AK,AL AK,AL	8 8 8

32-10-53

 ILLUSTRATED PARTS LIST
 01.1 Page 1064
 Mar 01/03

FIG. & ITEM	PART NO.	AIRLINE PART NUMBER	NOMENCLATURE 1234567	EFF CODE	QTY PER ASSY
09-					
125	NAS1802-3-8		.SCREW	AK,AL	4
130	NAS1149E0332R		.WASHER	AK,AL	4
135	287T6107-4003		.BOX ASSY-J	AK	1
-140	287T6107-4004		.BOX ASSY-J	AL	1
145	NAS1802-3-8		..SCREW	AK,AL	4
150	NAS1149E0332R		..WASHER	AK,AL	4
155	287T6146-11		..COVER	AK,AL	1
160	287T6135-3		..WELDMENT ASSY	AK	1
-165	287T6135-4		..WELDMENT ASSY	AL	1
170	NAS1802-06-6		.SCREW	AK,AL	8
R 175	BRH10C06M		.NUT- (V52828) (SPEC BACN10JC06CM) (OPT T6C632JM (V11815)) (OPT 97E62 (V80539)) (OPT 109LH9075-62W (V72962)) (OPT VN303D62 (V92215)) (OPT NS202101SE62 (V80539)) (OPT H01-06BAC (V15653))	AK,AL	8
-180	286T0670-OAF		.WIRE BUNDLE	AK	1
-185	286T0674-OAF		.WIRE BUNDLE	AK	1
-190	286T0682-OAF		.WIRE BUNDLE	AL	1
-195	286T0684-OAF		.WIRE BUNDLE	AL	1

- Item Not Illustrated

32-10-53

ILLUSTRATED PARTS LIST
01.1 Page 1065
Mar 01/03